

TRIBU

Our dream has always been to inspire people with our furniture. To offer that little something extra that elevates design from the ordinary to the extraordinary. We value the time we spend together as a family and the special atmosphere that good design, with every detail in harmony, helps to create.

Today Tribù is one of the oldest fully family-owned manufacturers of high-end outdoor furniture in the world. Our independence gives us the freedom to pursue our own strategy. As innovators, it is our passion to develop beautiful and timeless outdoor furniture that meet demanding standards, creating places to relax and leave the daily stress behind.

We hope to inspire you with this catalogue and our furniture. Love it, live it, share it!

Koen, Tom, Roel & Lode De Cock
Managing partners & President

TRIBÙ



THE ART
OF LEISURE

Living the good life outside, that's the essence of Tribù. Belgian, family-run design house Tribù adds discreet luxury and exclusivity to your terrace or garden. Our outdoor furniture is sold in over seventy countries, both in retail as in the contract sector. Enjoy world-class design: a refined cocktail of elegant modernism, distinctive purity and impeccable quality. Luxurious, but always discreet.

The reproduction of colours may differ from reality. All our designs are registered internationally.

ELIO	006
SENJA SOFA	020
TAO	036
VIS À VIS SOFA	046
VIS À VIS	062
NODI	068
REGISTA	082
TOSCA	094
MOOD	114
NATAL ALU	132
CTR	150
PAVILION DAYBED	164
BRANCH	170
KOS / PURE SOFA	184
ILLUM	198
MIRTHE	206
MONSIEUR TRICOT	220
ACCESSORIES	228
UMBRELLAS	242
PROJECT REFERENCES	248
FABRICS	290
PRODUCT OVERVIEW	298

YABU PUSHELBERG

ELIO

Elio, referring to the Greek sun god Helios, is inspired by the motion of light, reflecting and refracting on landscapes and objects throughout the day. The rich gradient effect in the seat and backrest, achieved by weaving multiple colours of yarn into one strand, mimics the gentle touch of light. Elio is characterized by a softly rounded silhouette that draws inwards to create a warm, intimate shelter.





ELIO 2-SEATER SOFA AND EASY CHAIR IN LINEN.

CUSHIONS IN NATURAL CLOUDY SKY, DECO IN SUJÁN MOSS, RUSTIC WEAVE MOSS, RUSTIC WEAVE MOSS WITH PIPING IN LEAF AND CANVAS TWEED BROWN.

NATAL ALU X TABLE 35X35CM H45CM IN WENGÉ.

ROOTS.

NOMAD POUF SMALL IN RUSTIC WEAVE MOSS.

SHINDI RUG IN HEMP.











STUDIO SEGERS

SENJA SOFA

Curl up and relax on the modular Senja sofa. Combine a one-, two- or three-seater module with high or low arms and keep everything you need to hand with an integrated table, console or side table in teak or glazed lava stone. With a choice of two seat depths and numerous weather-resistant fabrics, Senja lets you create the sofa you want, tailored to your personal style.





SENJA SOFA SET 19 WITH COFFEE TABLE IN TEAK.

CUSHIONS IN LINEN, DECO CANVAS MANDARIN, CAMDEN CARMINE RED, RUSTIC WEAVE BROWN.

NOMAD EASY CHAIRS, CUSHIONS IN LINEN CLAY.

ROOTS.

LOFT OUTDOOR RUG IN WENGÉ.

MADAME CACHET LAMPS 40 & 50CM IN BRICK.





SENJA SOFA SET 19 WITH COFFEE TABLE & MERIDIENNE RIGHT WITH SIDE TABLE IN TEAK. CUSHIONS IN LINEN, DECO CANVAS MANDARIN, CAMDEN CARMINE RED, RUSTIC WEAVE BROWN & RUSTIC WEAVE CORD. HEXAGON LOW & HIGH WITH LINEN TOP. NOMAD EASY CHAIRS WITH CUSHION IN RUSTIC WEAVE CORD. LOFT OUTDOOR RUG IN WENGÉ.





SENJA CONSOLE IN OCEAN LAVASTONE. NOMAD POUF IN LINEN MIST.



SENJA MERIDIENNES IN LINEN, CUSHIONS IN NATURAL AGED IVORY. LOFT OUTDOOR RUG IN WHITE. ROOTS. MADAME CACHET LAMPS IN LINEN Ø30 & 40CM.



MONICA ARMANI

TAO

The elegant Tao table collection is a lesson in perfectly balanced contrasts – bold sculptural pedestals and slim table tops that are pleasing to the touch. The use of refined lightened concrete gives the tables a look of elegant solidity. The Tao tables come in natural linen and warm wengé, tones to create striking centrepieces for any setting.





TAO DINING TABLE Ø 160CM IN WENGÉ. TOSCA ARMCHAIRS IN WENGÉ, CUSHIONS IN RUSTIC WEAVE CORD.



TAO DINING TABLE Ø 160CM IN WENGÉ. TOSCA ARMCHAIRS IN WENGÉ, CUSHIONS IN LINEN CLAY.



TAO DINING TABLE Ø 160CM IN WENGÉ. TOSCA ARMCHAIRS IN WENGÉ, CUSHIONS IN LINEN CLAY.



TAO COFFEE TABLES IN WENGÉ. SENJA 1-SEATER, CUSHIONS IN RUSTIC WEAVE BROWN.

PIERGIORGIO CAZZANIGA

VIS À VIS SOFA

The starting point for the Vis à Vis collection were the loungers created by Cazzaniga, whose aim was to encourage communication in a relaxed atmosphere. The integrated table is designed in a way that two loungers fit into each other and thanks to the flexible bed base, they can be arranged so you lie face to face or alongside each other. The square slats of the table are repeated in the floating platforms of the modular sofa system, whose comfortable cushions are held in place with invisible supports. Side tables and borders can be added to personalise the look.





VIS À VIS SOFA SET 5 WITHOUT BORDERS. SEAT CUSHIONS IN PARIS SAND, CASUAL BACK CUSHIONS IN CANVAS COTTON WHITE, DECO IN PEACH, CAMDEN BURNT GOLD, CANVAS MANDARIN, CANVAS TUSCAN LINEN & CANVAS TWEED BROWN WITH PIPING IN CANVAS TUSCAN LINEN.

NOMAD EASY CHAIRS, CUSHIONS IN DALSACE FLAX, DECO IN PEACH & RUSTIC WEAVE FRESCO. MONSIEUR LEBONNET LAMP 40CM IN LINEN. SHINDI OUTDOOR RUG IN LINEN.

VIS À VIS SOFA COFFEE TABLE 120X120CM. TAIRU WITH GLAZED LINEN TILE. C-TABLE TEAK.



VIS À VIS SOFA SET 18, SEAT CUSHIONS IN PARIS SAND, CASUAL BACK CUSHIONS IN CANVAS COTTON WHITE, DECO IN CANVAS TWEED BROWN, CANVAS LACE, PARIS SAND, NATURAL AGED IVORY, DALSACE FLAX, CAMDEN BURNT GOLD & CANVAS TWEED BROWN WITH PIPING IN CANVAS TUSCAN LINEN.

ELIO EASY CHAIR IN MOSS. T-TABLES Ø90CM H35CM IN LINEN/GLAZED LINEN TOP. NATAL ALU X TABLE Ø35CM IN LINEN AND BURGUNDY. NOMAD POUF SMALL IN RUSTIC WEAVE CORD. MADAME LATOQUE 40CM AND MADAME CACHET 30CM IN LINEN. SHINDI OUTDOOR RUG IN LINEN.



VIS À VIS SOFA, SEAT CUSHIONS IN PARIS SAND, CASUAL BACK CUSHIONS IN CANVAS COTTON WHITE, DECO IN CANVAS MANDARIN, CANVAS LACE & CANVAS LINEN CLAY WITH PIPING IN CANVAS TUSCAN LINEN.

ELIO EASY CHAIR IN LINEN, SEAT CUSHION IN CANVAS MANDARIN. TAIKU WITH GLAZED BURGUNDY TILE. NOMAD POUF LARGE IN RUSTIC WEAVE FRESCO. DROP IN LINEN. SHINDI RUG IN LINEN.





VIS À VIS SOFA, SET 17, SEAT CUSHIONS IN PARIS SAND, CASUAL BACK CUSHIONS IN CANVAS COTTON WHITE, DECO IN NUBBY MINK, CANVAS TUSCAN LINEN, CANVAS TWEED BROWN WITH PIPING IN CANVAS TUSCAN LINEN, CANVAS TWEED BROWN, DALSACE FLAX & CAMDEN BURNT GOLD.

NATAL ALU X TABLES 60X60CM & 35X35CM IN LINEN.

TAIRU WITH GLAZED LINEN TILE.

SHINDI OUTDOOR RUG IN LINEN.



VIS À VIS LOUNGER, CUSHION IN NATURAL AGED IVORY.



PIERGIORGIO CAZZANIGA

VIS À VIS

Teak is designer Cazzaniga's favourite material for outdoor furniture – it is natural, extremely durable and smooth to the touch. For the Vis à Vis chair, he further enhanced the smoothness of the wood by subtly rounding the corners of the frame. Together with the airy Canatex® weave that runs in one continuous, flowing line from seat to back, this gives a softness and warmth to the collection. The square slats that characterise the Vis à Vis sofa and lounge are continued with the dining table design. By repeating its one modular element, you can make a Vis à Vis table as long as you want, to seat as many guests as you wish.





VIS À VIS ARMCHAIRS & DINING TABLE 400X99CM. CUSHIONS IN NATTE WHITE.



YABU PUSHELBERG

NODI

Light and airy, the Nodi chair's form and silhouette are characterized by twisted-interlaced rope in weather resistant Canax®, stretched across a precise geometric wireframe. Pared back, refined proportions and a minimalist approach to materiality lend a casual lightness to the collection. The slim profile of the arm is angled slightly inward in a welcoming gesture.





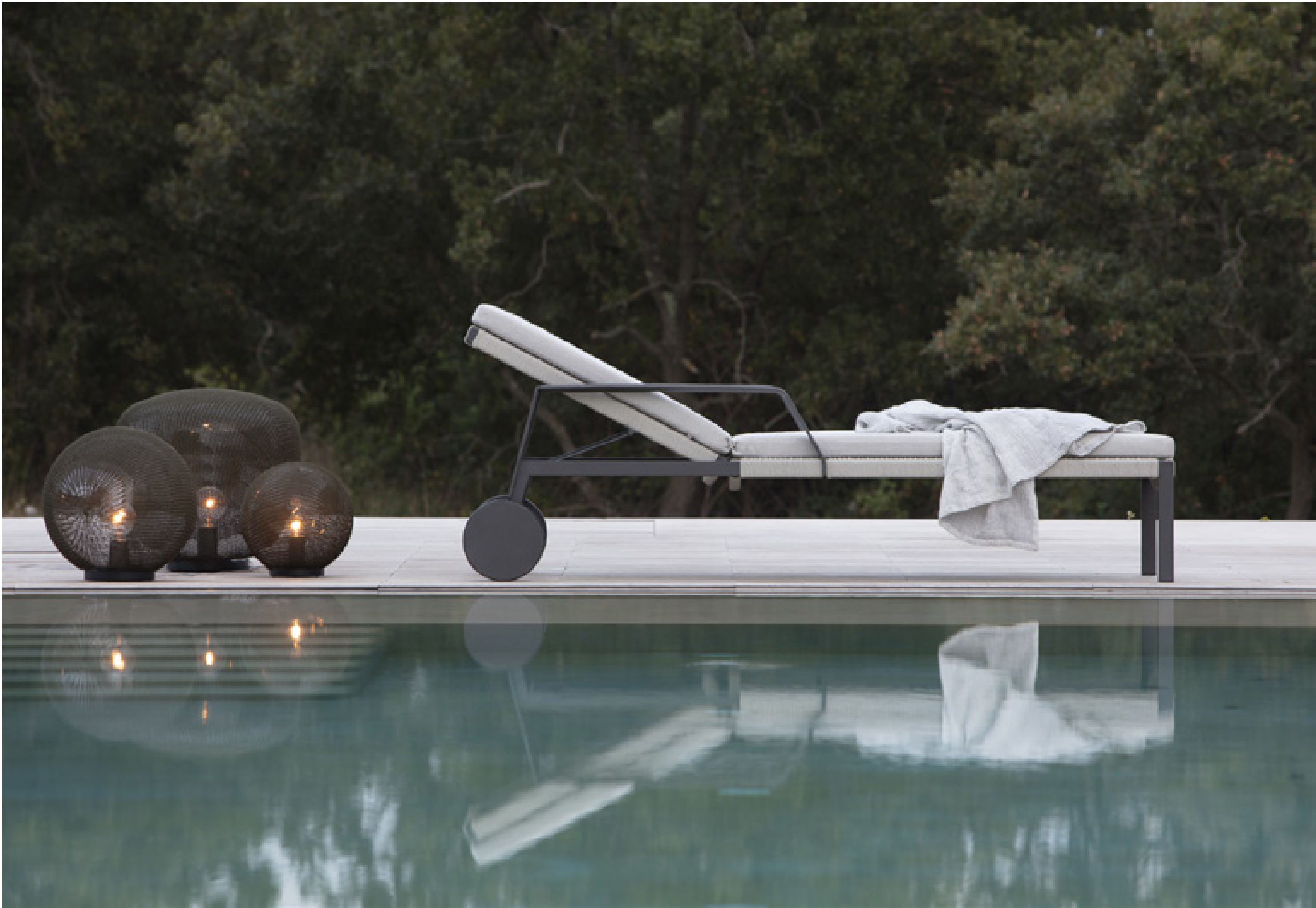
NODI ARMCHAIR IN WENGÉ/LINEN.





NODI EASY CHAIRS IN WENGÉ/LINEN, CUSHIONS IN LINEN GREY.







MONICA ARMANI

REGISTA

Regista is a sophisticated reinvention of a design icon. The perfectly balanced director's chair combines high-tech materials and meticulous attention to detail. The lattice back has the natural look and tactile appeal of rope. It is handwoven using an innovative weather-resistant fibre, also used to cover the armrests. The legs are slim and elegant, yet very durable and strong.









REGISTA ARMCHAIRS IN WENGÉ/WENGÉ WITH GRANITE SEAT. ILLUM DINING TABLE IN 267X100CM IN WENGÉ/PIOMBO TOP.





MONICA ARMANI

TOSCA

Tosca is the perfect mix of innovation and beauty, a collection as inviting to curl up in as it is intriguing to look at. The giant weave in hi-tech 'knitting', soft to the touch and completely weather-resistant, is complimented by slim legs in powdercoated stainless steel. The soft, tonal contrasts between weave and frame adds to the discreet luxury.









TOSCA CLUB CHAIR & DAYBED IN WENGÉ, CUSHIONS IN REVERSED DOTS MOSS, DECO IN VELVET MOSS & LINEN OYSTER.

TOSCA SIDE TABLE & DROPS IN WENGÉ.

NOMAD IN VELVET MOSS & DOTS GREY.

LOFT OUTDOOR RUG IN LINEN.



TOSCA CLUB CHAIR & COFFEE TABLE IN WENGÉ. CUSHIONS IN LINEN OYSTER, DECO CUSHIONS IN VELVET MARINE BLUE. LOFT OUTDOOR RUG IN WENGÉ.



TOSCA DAYBEDS IN LINEN, CUSHIONS IN TWIST LINEN, DECO IN LUXURY BLUE & RUSTIC WEAVE CORD.





TOSCA SOFA 3-SEATER IN WENGÉ, CUSHIONS IN REVERSED DOTS GREY, DECO IN VELVET GREY & PARIS SAND.

VIS À VIS COFFEE TABLE 99X99CM,

BRANCH COFFEE TABLE Ø70CM H27CM IN WENGÉ WITH CONCRETE LINEN TOP.

NOMAD IN NUBBY EBONY, PARIS SAND & DOTS GREY.

LOFT OUTDOOR RUG IN WENGÉ.



TOSCA LOUNGERS IN LINEN, CUSHIONS IN WASHED LINEN.



TOSCA SOFA 3-SEATER IN LINEN, CUSHIONS IN TWIST LINEN, DECO IN LUXURY BLUE & RUSTIC WEAVE CORD.

STUDIO SEGERS

MOOD

Combining the natural beauty of high-quality plantation teak with a weave in refined, soft to the touch Tricord, the Mood collection is styled with informal comfort and elegance. The supple, weather-resistant Tricord straps are handwoven around curved aluminium back frames, complementing the glow of precision-cut teak, finished with gently rounded corners.









MOOD ARMCHAIRS IN LINEN. SEAT CUSHIONS IN CANVAS TWEED BROWN, CASUAL BACK CUSHIONS IN RUSTIC WEAVE DARK GREY. VIS À VIS TABLE.



MOOD ARMCHAIRS IN LINEN. SEAT CUSHIONS IN CANVAS TWEED BROWN, CASUAL BACK CUSHIONS IN RUSTIC WEAVE DARK GREY. ILLUM DINING TABLE 267X100CM IN TEAK/TEAK TOP.



MOOD SOFA 2-SEATER IN LINEN.
SEAT CUSHIONS IN CANVAS TUSCAN LINEN, CASUAL BACK CUSHIONS IN NATURAL AGED IVORY, DECO IN RUSTIC WEAVE BROWN & SUJÁN HEMP.

NATAL ALU X TABLES Ø35CM, 35X35 CM & 40C40CM IN BURGUNDY.

SHINDI OUTDOOR RUG IN HEMP.



MOOD SOFA CLUBCHAIRS, 2-SEATER & 3-SEATER IN LINEN. SEAT CUSHIONS IN CANVAS TUSCAN LINEN, CASUAL BACK CUSHIONS IN NATURAL AGED IVORY. DECO IN RUSTIC WEAVE BROWN, RUSTIC WEAVE DARK GREY & LINEN CLAY WITH PIPING IN CANVAS TUSCAN LINEN.

ROOTS. TAIRU WITH GLAZED BURGUNDY TILE. NATAL ALU X TABLE Ø35CM IN BURGUNDY. SHINDI OUTDOOR RUG IN HEMP.



MOOD ARMCHAIRS IN LINEN. SEAT CUSHIONS IN CANVAS TWEED BROWN, CASUAL BACK CUSHIONS IN RUSTIC WEAVE DARK GREY. VIS À VIS DINING TABLE 400X99CM.



MOOD DAYBED IN LINEN. SEAT CUSHIONS & CASUAL BACK CUSHIONS IN DALSACE FLAX, DECO IN LINEN MIST - PIPING IN CANVAS SEASALT, RUSTIC WEAVE ICE GREY - PIPING IN LINEN MIST & CANVAS SEASALT- PIPING IN CANVAS LACE.
NOMAD POUFS SMALL IN PARIS SAND & LINEN MIST, MEDIUM IN CANVAS SEASALT.

STUDIO SEGERS

NATAL ALU

The Natal Alu sofa displays Tribù's design and technical skills with a slender, minimal frame and generous, water repellent sofa cushions. Twenty different modules with two different seat depths can be adapted to fit any space with refined elegance. The wide range in fabrics adds to the flexibility of this timeless design sofa. The Natal Alu dining chairs continue the theme with seats that appear to float within a light frame.





NATAL ALU SOFA SET 1A IN WENGÉ. CUSHIONS IN RUSTIC WEAVE ICE GREY, DECO IN CANVAS AZURE BLUE, LINEN MIST WITH PIPING IN CANVAS SEASALT & LINEN OYSTER WITH PIPING IN CURAÇÃO.

NATAL ALU X TABLE 40X40CM IN WENGÉ. T-TABLE DIA 90CM H35CM IN LINEN/ GLAZED OCEAN TOP. LOFT RUG IN WHITE.



NATAL ALU SOFA SET 1A IN WENGÉ. CUSHIONS IN RUSTIC WEAVE ICE GREY, DECO IN CANVAS AZURE BLUE, LINEN MIST WITH PIPING IN CANVAS SEASALT, LINEN OYSTER WITH PIPING IN CURAÇAO, LINEN MIST & CANVAS SEASALT WITH PIPING IN LINEN MIST. ELIO EASY CHAIR IN LINEN, CUSHION IN RUSTIC WEAVE ICE GREY. NATAL ALU X TABLE 40X40CM IN WENGÉ. T-TABLE DIA 90CM H35CM IN WENGÉ/ GLAZED OCEAN TOP. LOFT RUG IN WHITE. MADAME CACHET 50CM & MONSIEUR LEBONNET 30CM IN WENGÉ.







NATAL ALU SOFA SET 10 IN WENGÉ. CUSHIONS IN RUSTIC WEAVE ICE GREY, DECO IN RUSTIC WEAVE LAGOON, LINEN OYSTER WITH PIPING IN CURAÇAO, CURAÇAO WITH PIPING IN LINEN & CANVAS SEASALT WITH PIPING IN LINEN MIST.

TAO COFFEE TABLES IN LINEN.

POUF SMALL IN CANVAS AZURE BLUE & LARGE IN VELVET OYSTER.

SHINDI RUG IN LINEN.







PIERGIORGIO CAZZANIGA

CTR

The CTR collection is characterized by a tube in powdercoated stainless steel that follows its outline in one continuous line. With a lightness of touch the open weave of the backrest appears to float unsuspended around the upholstered seat. The CTR collection is a complex design created with an effortless, relaxed style.













CTR ARMCHAIRS IN WENGÉ/WENGÉ, CUSHIONS IN NATTE MIST. VIS À VIS DINING TABLE 400X99CM.



MONICA ARMANI

PAVILION DAYBED

Capture sunshine and shade with the Pavilion Daybed. The classic canopied bed has been updated with a slim-line powdercoated aluminium frame. The daybed can be personalised with a choice of sheer curtain fabrics and paint finishes, while the back and ceiling come in teak slats, aluminium slats or Sunvision. The roof in Sunvision can be moved to enjoy the sun to the fullest.



STYLING BY TERRAZA BALEAR



PAVILION DAYBED IN WENGÉ WITH ROOF IN MOVABLE SUNVISION NATURE GREY AND BACK WALL IN SUNVISION NATURE GREY.

CUSHIONS IN NUBBY EBONY, DECO IN NATTÉ ANIS & CHALK.

CURTAINS IN VELUM NATURE GREY.

NOMAD SMALL IN CHALK & NATTÉ FOREST.



PAVILION DAYBED IN WHITE WITH ROOF AND BACK WALL IN TEAK. CUSHIONS IN NUBBY BLUE, DECO IN NATTÉ FOREST & CHALK. CURTAINS IN VELUM OYSTER.

LIEVORE ALTHERR MOLINA

BRANCH

Just as sunlight filters through the branches of a tree, so it illuminates the Branch collection. Slender legs and lattice seats give Branch a lightness and delicacy, while the clever design and hi-tech materials make the collection highly comfortable and durable. "Branch strengthens the emotional connection with nature. It creates a feeling of respect and fascination with the natural environment," says designer Manel Molina.







BRANCH SIDECHAIRS, ARMCHAIR & DINING TABLE 300X110CM IN LINEN.



BRANCH LOUNGER IN WENGÉ, CUSHION IN DOTS MOSS. NOMAD IN VELVET YELLOW.



BRANCH CONTRACT TABLE Ø 80CM & SIDE CHAIR IN WENGÉ, CUSHIONS IN VELVET YELLOW, NOMAD IN VELVET YELLOW.



BRANCH BEACH CHAIR IN WENGÉ, SEAT IN ASH.



WIM SEGERS / ANDREI MUNTEANU

KOS / PURE SOFA

The Kos and Pure Sofa collection share the warmth of smooth Javanese plantation teak and a clean, simple design. The gentle curve of the Kos chairs and their deep seats provide an excellent seating comfort. The finely balanced proportions of the Pure Sofa are offset by soft, deep sofa cushions, which come in two designs and an array of luxury outdoor fabrics. The five modular elements can be combined as desired to create welcoming seating areas.















KOS LOUNGERS & SIDE TABLES, CUSHIONS IN NATURAL SEASHELL.

MERCKX & MAES

ILLUM

The Illum collection refines and reworks the essence of Scandinavian furniture design. Belgian design duo Merckx & Maes has created a line of finely proportioned pieces based on the pure and graceful curves of traditional wooden furniture. The collection is made of durable coated aluminium, allowing the designers to create a slender silhouette with a solid, weather-resistant metal.









ILLUM LOUNGER IN WENGÉ WITH PUMP SYSTEM.

FABIAAN VAN SEVEREN
STUDIO SEGERS

MIRTHE

With minimalism the genius is in the detail. The clean lines of the Mirthe Collection appear to flow into each other seamlessly. Table legs fold perfectly around the table top and chair backs are an elegant curve sweeping down into the legs. Nothing is hidden in Mirthe's vision.





MIRTHE DINING TABLE 300X110CM & BENCHES 120CM IN WHITE, CUSHIONS IN NATTE WHITE. NATAL ALU ARMCHAIRS IN WHITE.



MIRTHE LOUNGER IN WHITE, CUSHION & HEADREST IN NATTE WHITE.





MIRTHE SOFA AND COFFEE TABLE IN WHITE. CUSHIONS IN NUBBY EBONY, DECO IN NUBBY EBONY, WASHED LINEN, NATTÉ WHITE & WASHED LINEN. DROPS IN WHITE. C-TABLE IN WHITE. LOFT OUTDOOR RUG IN WENGÉ.



MIRTHE ARMCHAIR & SIDECHAIR IN LINEN.



ILIA ECKARDT

MONSIEUR TRICOT

Belgian designer Ilia Eckardt grew up immersed in the Belgian fashion scene, experimenting with innovative knitting techniques and materials. His weatherproof, hand crocheted and knitted globe and drop lights give a warm glow and cast beautiful shadows. Different shapes, textures and colours are the perfect ingredients to create a cosy ambience.





MADAME CACHET STANDING LAMP 50CM & MONSIEUR LEBONNET STANDING LAMP 40CM IN BRICK. NOMAD EASY CHAIR, CUSHION IN LINEN CLAY.



MONSIEUR ELLIPSE HANGING LAMP, MADAME LATOQUE HANGING LAMP 40CM & MONSIEUR LEBONNET HANGING LAMP 40CM IN LINEN.
MADAME CACHET STANDING LAMP 30CM & MADAME LATOQUE STANDING LAMP 40CM IN LINEN. ELIO ARMCHAIRS IN LINEN. TAO DINING TABLE Ø160CM IN LINEN.



MONSIEUR LEBONNET STANDING LAMP 30CM, 40CM & 60CM IN WHITE.

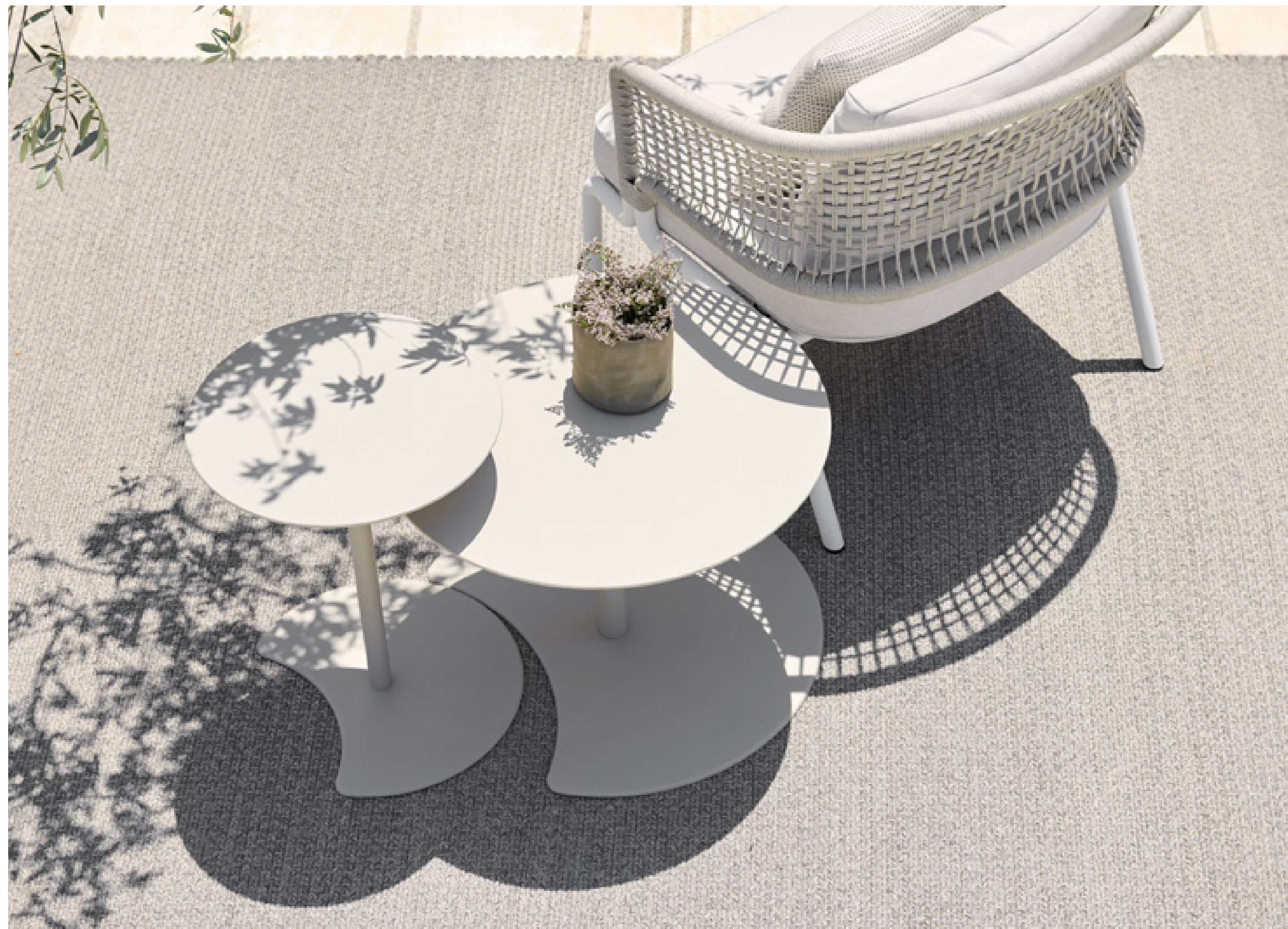
ACCESSORIES

Cleverly chosen accessories help you create an warm and elegant atmosphere for outdoor entertaining. A group of colourful, multi-shaped poufs make an instant seating area. Small side tables are easy to position, just where you need them. Rugs in natural shades add warmth and focus to your outdoor room and teak-framed lanterns cast gentle pools of light.





TAIRU WITH TILE IN GLAZED BURGUNDY LAVA STONE. SHINDI RUG IN HEMP.





NATAL ALU X TABLES 60X60CM & 35X35CM IN WENGÉ. SHINDI RUG IN LINEN.



HEXAGON LOW AND HIGH WITH TOP IN GLAZED MOSS LAVA STONE.



ROOTS IN SOLID PLANTATION TEAK.



UMBRELLAS







ECLIPSE ALU UMBRELLA Ø 320CM WITH NATTÉ WHITE FABRIC. NATAL ALU LOUNGERS.

PROJECT
REFERENCES

Belgian Embassy Algiers, Algeria
Jackalope Hotel Merricks, Australia
35 Spring Street residences, Melbourne, Australia
Kooyong Lawn Tennisclub Melbourne, Australia
Starcity Casino Sydney, Australia
Trumph International Hotel & Tower Baku, Azerbaijan
Four Seasons Jimbaran Bay, Bali
Hotel Julien Antwerp, Belgium
Bubbles Champagne bar Hasselt, Belgium
Carbon Design Hotel Genk, Belgium
Coca Cola headoffice Brussels, Belgium
Flemish Parliament Brussels, Belgium
Pfizer Zaventem, Belgium
Radison Blu Balmoral Spa, Belgium
Four Seasons Toronto, Canada
Hotel Excelsior, Dubrovnik, Croatia
Radisson Blu Resort & Spa Dubrovnik, Croatia
Alasia Hotel Limassol, Cyprus
Pausa Café Prague, Czech Republic
Intercontinental Natadola, Fiji
Air France Paris, France
Centre Pompidou Metz, France
Domaine La Coquillade Gargas, France
La Réserve Ramatuelle, France
Hotel Du Collectionneur Paris, France
La Vinicole Paris, France
Le Grand Hôtel Cabourg - MGallery, France
Le Val Thorens Val Thorens, France
Les Cures Marines Trouville, France
Restaurant Azur Reims, France
Lagoon Seventy 7 & 8, France

Four Seasons Megève, France
Intercontinental Resort Tahiti Faa'a, French Polynesia
Cruiseship A' rosa Blue Seetours, Germany
Schloss Elmau Krün, Germany
Blue Palace Resort & Spa Crete, Greece
Hotel Cape Suonio Athens, Greece
Grecotel Olympia Riviera Thalasso Pelloponnesos, Greece
Grace Hotel Santorini, Greece
Hyat Regency Tsim Sha Tsui Hong Kong, Hong Kong
Four Seasons Resort Bali, Indonesia
Royal Irish Yachtclub Dublin, Ireland
Saint George International Jerusalem, Israel
Sharon Hotel Herzliah, Israel
Bulgari jewelry production facility Valenza, Italy
Pettolecchia il Lido, Italy
Grand Palladium Jamaica Montego Bay, Jamaica
Four Seasons Kyoto, Japan
Kourakuen Spa Tokyo, Japan
Belgian Embassy Tokyo, Japan
Hiramatsu Hotel Sengokuhara, Japan
The Hiramatzu Ginoza, Japan
Four Seasons Amman, Jordan
Hyatt Regency, Aqaba, Jordan
Royal Palace Amman, Jordan
Four Seasons Burj Alshava, Kuwait
Chez Sami Beirut, Lebanon
Crowne Plaza Hotel Beyrouth, Lebanon
Domaine Thermal de Mondorf Mondorf-les-bains, Luxembourg
Deloitte Luxembourg, Luxembourg
Four Seasons Resort Kuda Huraa, Maldives
St Regis Vommuli, Maldives

Waldorf Astoria, Ithaafushi, Maldives
Four Seasons Langkawi, Malaysia
The Westin Kualo Lumpur Kuala Lumpur, Malaysia
Belgian Consulate Cassablanca, Marokko
Sci Ben Le François, Martinique
Royal Palm Grande Baie, Mauritius
Four Seasons Resort Punta Mita, Mexico
Hôtel de Paris, Monte Carlo, Monaco
Belgian Beer Café Kiev, Oekraïne
Belgian Embassy Manilla, Philippines
Herdade da Malhadinha, Albernoa, Portugal
Troia Design Grandola, Portugal
Vilalara Thalassa Resort Lagoa, Portugal
Coffeemania Moscow, Russia
Ritz-Carlton Moscow, Russia
Hôtel Le Christopher, Saint Barths
Princess Noura University Ryadh, Saoudi Arabia
Savoy Resort & Spa Beau Vallon, Seychelles
Twin Peaks, Singapore
Urban Resort Condominium, Singapore
Mariott Hotel, Singapore
St Regis Hotel, Singapore
Reflections Keppel Bay, Singapore
Joj Café Shopping Mirage Žilina, Slovakia
Hotel Palace Portoroz, Slovenia
Cape Coral Hotel Cape Town, South Africa
The One & Only Hotel Capetown, South Africa
Pause Jeju, South Korea
Hard Rock Hotel Ibiza, Spain
Ibiza Gran Hotel Ibiza, Spain
Ushuaia Beach Hotel Ibiza, Spain

Reina Victoria Melia hotels Madrid, Spain
Mar de Nudos Mall Vell - Palma, Spain
Castell son Claret Mallorca, Spain
Abadia Retuerta Le Domaine Valladolid, Spain
Pullman Barcelona, Spain
Nespresso Lausanne, Switzerland
Dubai Marina Mall & Hotel Dubai, UAE
Hilton Baynunah Abu Dhabi, UAE
Al Mahara Burj al Arab, Dubai, UAE
Intercontinental Hotel Abu Dhabi Abu Dhabi, UAE
Mix by Alain Ducasse, Emerald Palace Kempinski, Dubai, UAE
Park Inn Yas Island Abu Dhabi, UAE
Drift Beach Abu Dhabi, UAE
Park Inn Yas Island Abu Dhabi, UAE
BBC London, UK
Radisson Blu Edwardian London, UK
South Place Hotel London, UK
Turnberry Golf Course Ayrshire, UK
Hilton Hotel Atlanta - Georgia, USA
Mondrian Hotel West Hollywood, USA
Four Seasons New York, USA
Park Hyatt New York, USA
Parker Meridien Hotel New York City - New York, USA
Four Seasons Hotel at the Surf Club Miami, USA
Rancho Valencia Rancho Santa Fe, USA
The Modern Honolulu Honolulu - Hawaï, USA
Four Seasons O'Ahu Hawaï, USA
Ponant Cruises
Queen Elizabeth cruiseship, Cunard
...

























Restaurant















TECHNICAL
SPECIFICATIONS

FABRICS

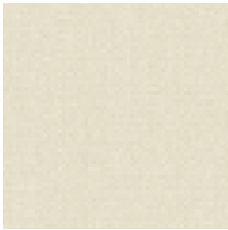
Taking nature's palette as inspiration, Tribù's fabric collection consists of a wide range of weatherproof fabrics. The colours of the seasons, cool green leaves, sun-baked earth and glowing skies are captured in subtle, harmonising shades. Tactile, richly textured fabrics such as Rustic Weave add depth and contrast when paired with fine linen-look fabrics in natural tones. Our innovative use of high-performance synthetic fibres allows us to create fabrics that resist outdoor conditions, but nonetheless are superior in touch, feel and look.



SUNBRELLA



01 - NATTÉ WHITE



02 - CANVAS



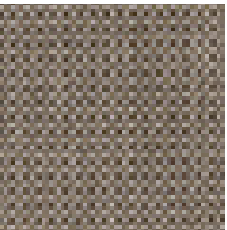
06 - NATTÉ DUNE



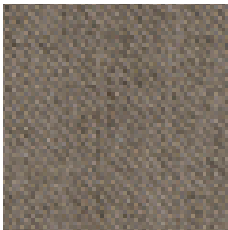
07 - PAPYRUS



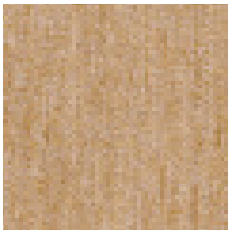
15 - ASHE



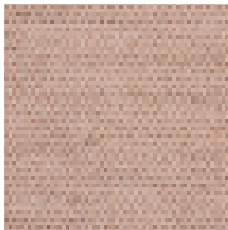
46 - NATTÉ STARDUST



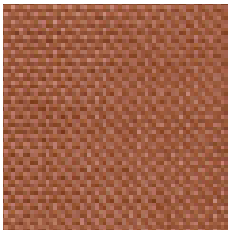
65 - NATTÉ BASALT



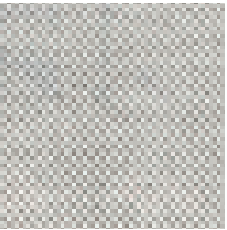
12 - PEACH



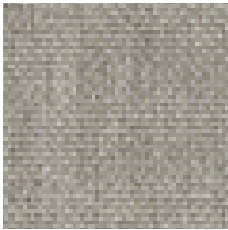
11 - BLUSH



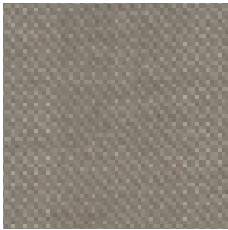
13 - INDIAN SUMMER



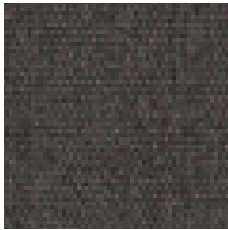
69 - NATTÉ SILVERGREY



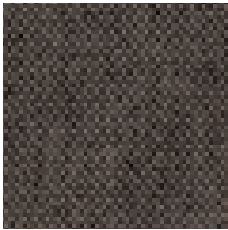
45 - NATTÉ MIST



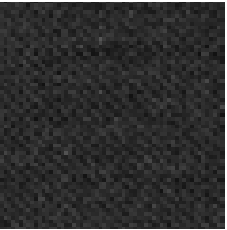
64 - NATTÉ NATURE GREY



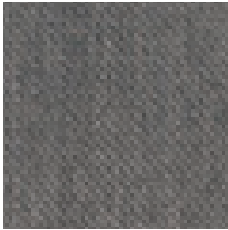
76 - GRANITE



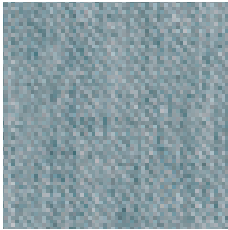
89 - NATTÉ WENGÉ



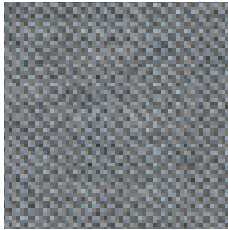
79 - NATTÉ SOOTY



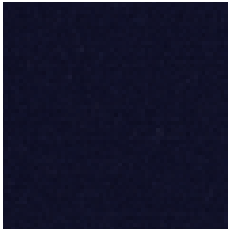
75 - NATTÉ CHARCOAL



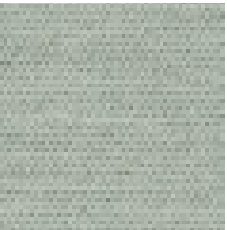
34 - NATTÉ FROST CHINÉ



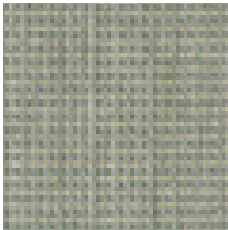
08 - NATTÉ CARBON SKY



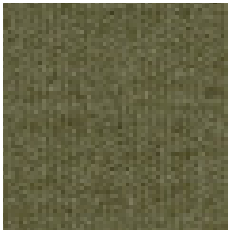
09 - NAVY BLUE



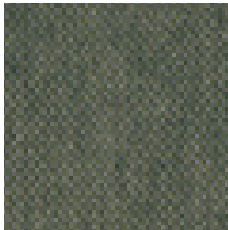
10 - CURAÇAO



44 - NATTÉ ANIS



42 - LEAF



40 - NATTÉ OLIVE

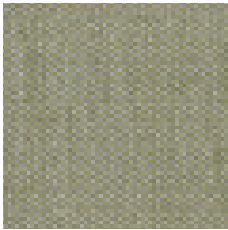
CANVAS



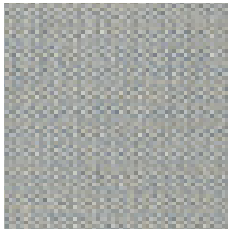
B110 - COTTON WHITE



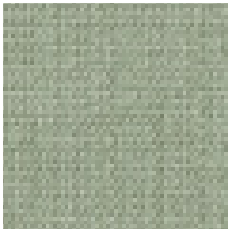
B118 - LACE



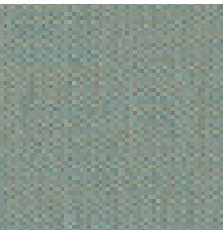
B121 - SEAGRASS



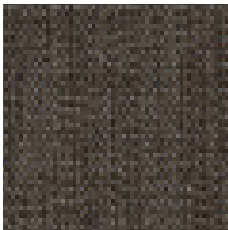
B119 - SEASIDE BLUE



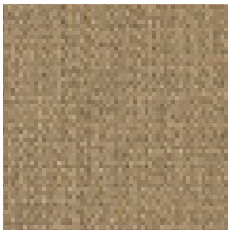
B120 - SEASALT



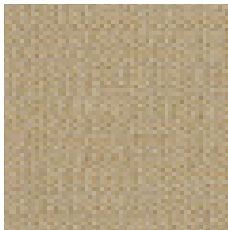
B117 - AZURE BLUE



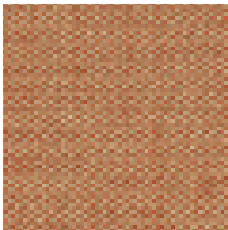
B113 - HAVANA BROWN



B111 - TWEED BROWN



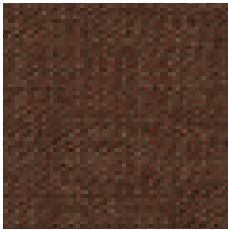
B112 - TUSCAN LINEN



B116 - MANDARIN



B115 - RUBY RED

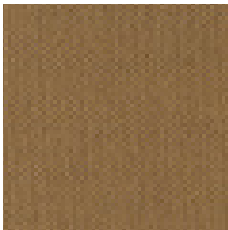


B114 - MERLOT RED

CAMDEN



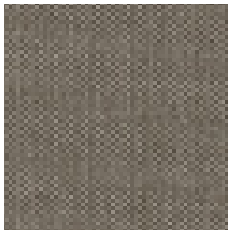
B128 - ANTIQUE WHITE



B129 - BURNT GOLD



B131 - LATTECCINO



B130 - ESPRESSO



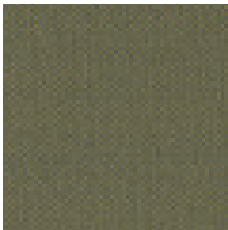
B132 - DARK OAK



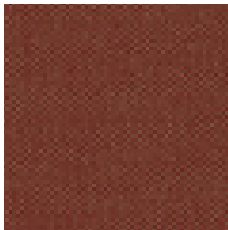
B133 - PURE CHOCOLATE



B135 - LEMONGRASS

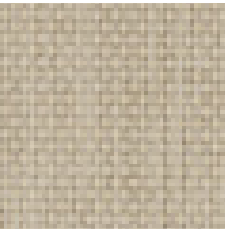


B134 - EUCALYPTUS

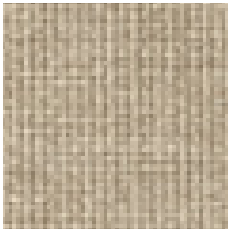


B136 - CARMINE RED LINEN

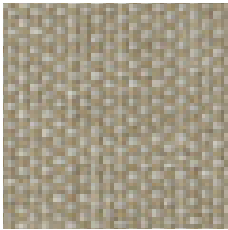
LINEN



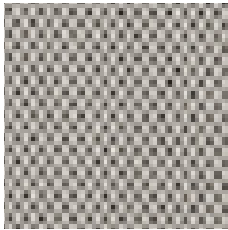
B13 - CHALK



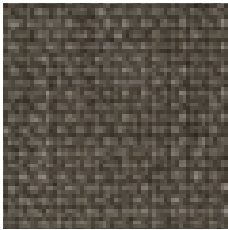
B12 - LINEN



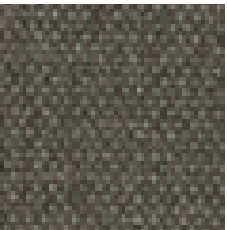
B15 - WASHED LINEN



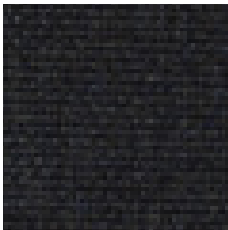
B69 - SILVERSTONE



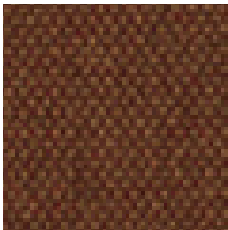
B57 - LINEN GREY



B77 - LINEN MIST



B80 - LINEN INDIGO



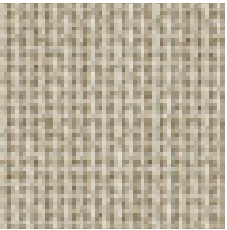
B81 - LINEN CLAY



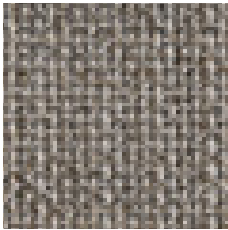
B78 - LINEN CACTUS



B79 - LINEN PINE GREEN

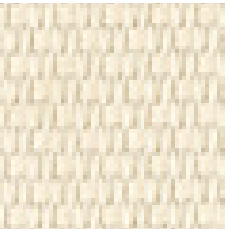


B54 - LINEN OYSTER



B55 - LINEN SCISTO

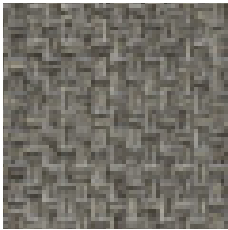
LUXURY



B32 - PURE WHITE



B02V2 - CANVAS



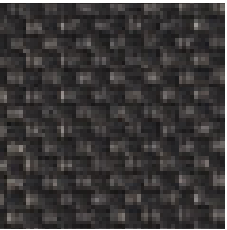
B72 - DOLPHIN



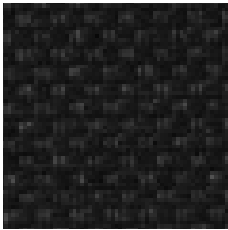
B71 - DOVE



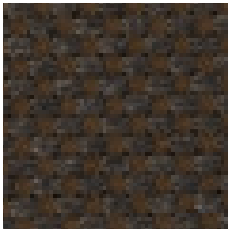
B93 - SEAL



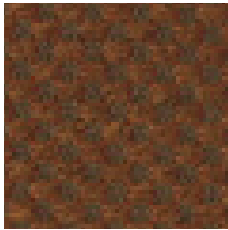
B96 - OFF BLACK



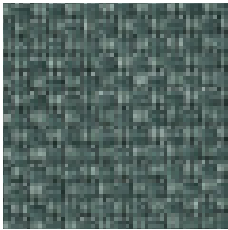
B06 - BLACK



B84 - SPICE

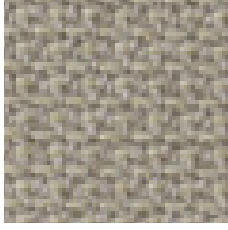


B22 - PUMPKIN

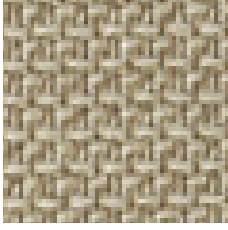


B07 - BLUE

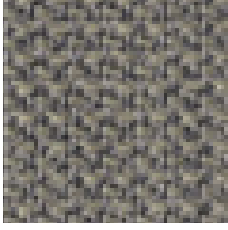
RUSTIC WEAVE



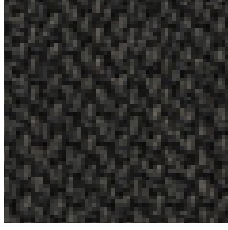
B146 - ICE GREY



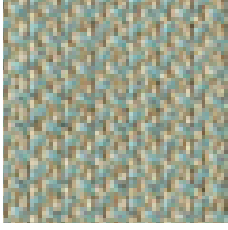
B144 - CORD



B140 - DARK GREY



B147 - BLACK



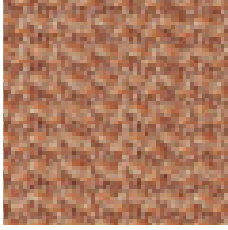
B153 - LAGOON



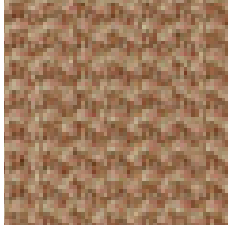
B149 - GRASS



B142 - MOSS



B150 - ABRICOT

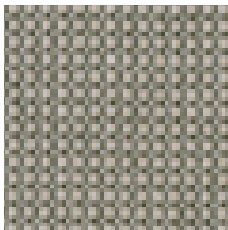


B152 - FRESCO

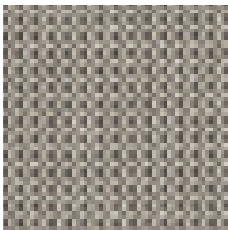


B151 - BROWN

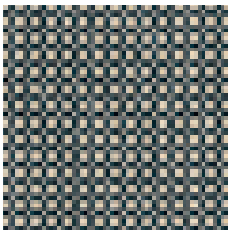
DOTS



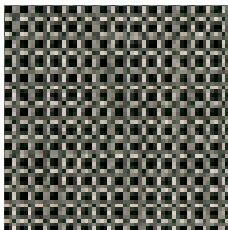
B104 - REVERSED GREY



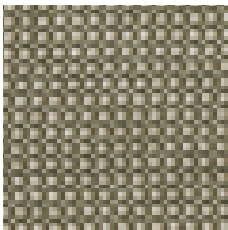
B100 - GREY



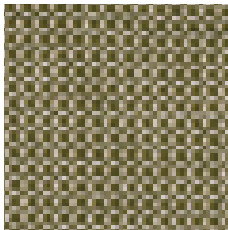
B106 - REVERSED BLACK



B102 - BLACK



B105 - REVERSED MOSS



B101 - MOSS

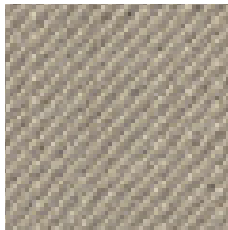
DALSACE



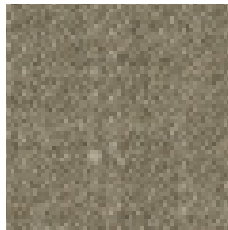
B41 - CANVAS



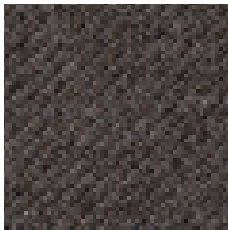
B42 - FLAX



B43 - SNOW GREY



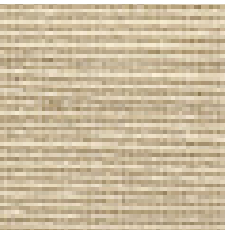
B44 - ZINC



B45 - NIGHT

The reproduction of colors may differ from reality.

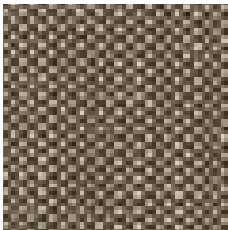
NATURAL



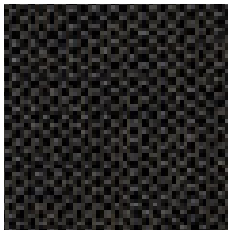
B156 - AGED IVORY



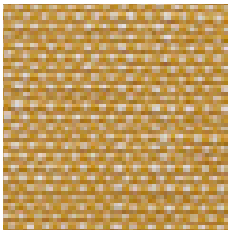
B154 - SEASHELL



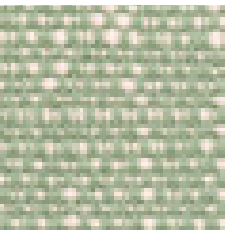
B155 - CLOUDY SKY



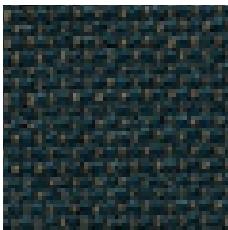
B157 - UMBRA



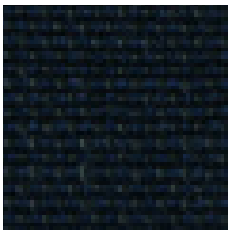
B161 - SAFFRON



B160 - AQUAMARINE



B159 - AMALFI

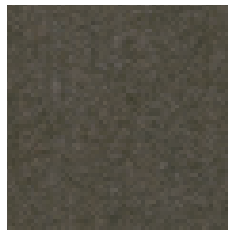


B158 - METROPOLE

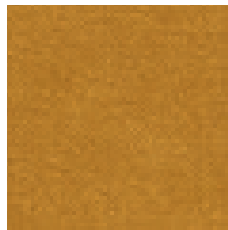
VELVET



F169 - OYSTER



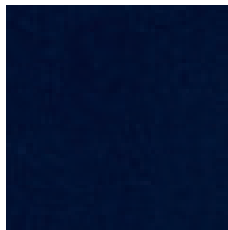
F170 - GREY



F163 - YELLOW



F142 - MOSS

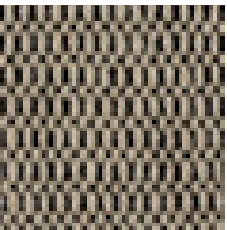


F139 - MARINE BLUE

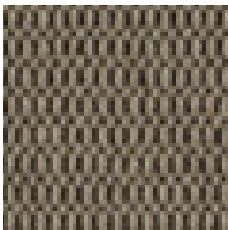


F125 - ROSSO

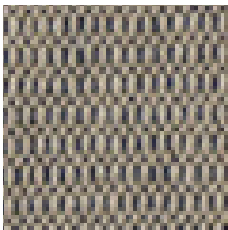
NUBBY



B17 - NUBBY EBONY

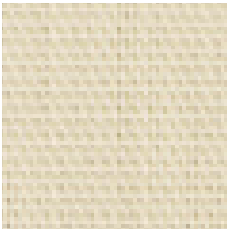


B18 - NUBBY MINK

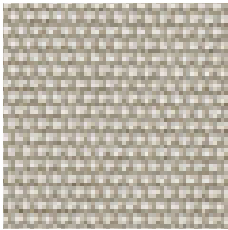


B19 - NUBBY BLUE

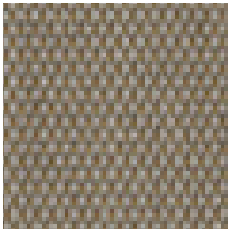
SLING



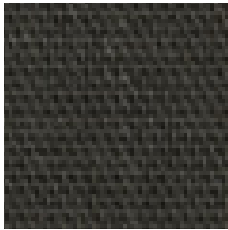
SLI00 - SLING SNOW



SLI01 - SLING SEAGUL

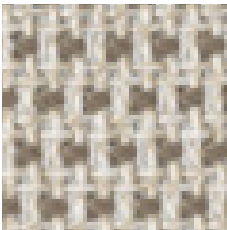


SLI02 - SLING SPACE

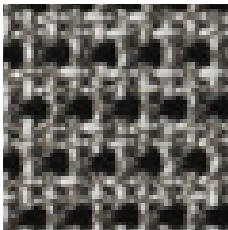


SLI03 - SLING GRAPHITE

PARIS

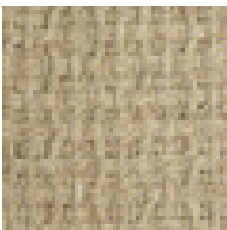


BD11 - PARIS SAND

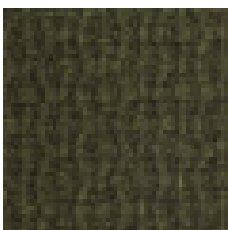


BD90 - PARIS BLACK

SUJÀN

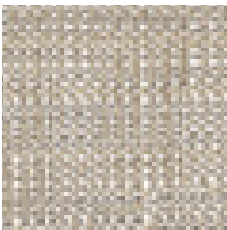


F01 - SUJÀN HEMP



F02 - SUJÀN MOSS

TWIST



B10 - TWIST LINEN

The reproduction of colors may differ from reality.

Light and airy, the Nodi chair's form and silhouette are characterized by twisted-interlaced rope in weather resistant Canax®, stretched across a precise geometric wireframe. Pared back, refined proportions and a minimalist approach to materiality lend a casual lightness to the collection. The slim profile of the arm is angled slightly inward in a welcoming gesture.

Product code 01918
W 22,8" D 24" H 34,3" SH 18,5"
W 58cm D 61cm H 87cm SH 47cm

00 - WHITE

89 - WENGÉ

FRAME

00 - OFF WHITE

10 - LINEN

WEAVE

NODI
P. 69-73

DESIGN BY YABU PUSHELBERG



AVAILABLE COLOUR COMBINATIONS,
SEE PRICE LIST.

CTR is characterised by a tube in powdercoated stainless steel that follows the outline of the chair in one continuous line. The woven backrest is attached at only 2 points to the frame, resulting in a flexible backrest that ensures an outstanding back support. The yarn in polyolefin resists all weather conditions, but has nevertheless a surprisingly natural look & feel. The seat is upholstered with a water-repellent cushion which can be easily removed.

Product code 01118
W 22,8" D 22,4" H 30,3" SH 17,3"
W 58cm D 57cm H 77cm SH 44cm

00 - WHITE

89 - WENGÉ

FRAME

10 - LINEN

89 - WENGÉ

WEAVE

CTR
P. 157, 161

DESIGN BY PIERGIORGIO CAZZANIGA



AVAILABLE COLOUR COMBINATIONS,
SEE PRICE LIST.

The combination of the broad slats and the pure but powerful design of the Kos chair, reinvents teak in a modern way. Thanks to the ergonomically formed back, the chairs provide an excellent seating comfort. Tribù uses only the very best plantation wood from East-Java. Every log is hand-picked during the cutting process of the tree.

Product code 04018
W 21,3" D 22,8" H 33,1" SH 18,5"
W 54cm D 58cm H 84cm SH 47cm

TEAK

KOS
P. 185

DESIGN BY WIM SEGERS



A slender and light frame in aluminium with nevertheless a very solid stability thanks to the technique of high pressure injection. A double layer of ultra durable powdercoating ensures maximal scratch resistance. Excellent seating comfort thanks to the anatomic resilience of the back. The back and seat are made of reinforced, mass dyed polypropylene with an excellent UV resistance.

Product code sidechair 07610
W 21,3" D 22,4" H 31,5" SH 17,3"
W 54cm D 57cm H 80cm SH 44cm

Product code armchair 07618
W 23,2" D 22,4" H 31,5" SH 17,3"
W 59cm D 57cm H 80cm SH 44cm

00 - WHITE

10 - LINEN

89 - WENGÉ

BRANCH
P. 175, 179, 183

DESIGN BY LIEVORE ALTHERR MOLINA



The outdoor translation of the archetypical Scandinavian design with materials that resist all weather conditions. The beautifully sculptured back in aluminium is completely seamless thanks to the technique of high pressure injection. Dual powdercoating ensures optimal scratch and UV resistance. The seat in Batylne® provides an excellent seating comfort.

Product code 06518
W 22" D 19,7" H 29,9" SH 17,7"
W 56cm D 50cm H 76cm SH 45cm

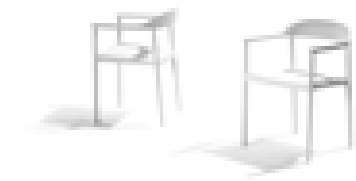
00 - WHITE

10 - LINEN

89 - WENGÉ

ILLUM
P. 199-203

DESIGN BY MERCKX & MAES



Minimalism with a playful twist. The chair has been designed from a single surface and is made of 6mm bent plate aluminium which creates the effect of one flowing line. The back legs move seamlessly up to the back. Available with or without armrests and stackable for easy storage.

Product code sidechair 07410
W 20,1" D 24,8" H 31,5" SH 18,5"
W 51cm D 63cm H 80cm SH 47cm

Product code armchair 07418
W 20,9" D 24,8" H 31,5" SH 18,5"
W 53cm D 63cm H 80cm SH 47cm

00 - WHITE

10 - LINEN



MIRTHE
P. 217

DESIGN BY WIM SEGERS

A collection of impeccable class and strong charisma. The straight lines of the aluminium frame contrast beautifully with the flowing, curved seat in Batyline®. The frame is powdercoated with ultra-durable structure lacquer for a nice matte look. Batyline® from Ferrari is renowned for its exceptional tear strength and dimensional stability, ensuring it will keep its shape along with its colour.

NATAL ALU
P. 139, 141, 145, 209

DESIGN BY WIM SEGERS

Product code 05918
W 20,9" D 20,1" H 33,1" SH 18,5"
W 53cm D 51cm H 85cm SH 47cm

00 - WHITE

89 - WENGÉ



A combination of excellent ergonomic seating comfort with a soft, natural look. The teak, coming from plantations in East-Java, has rounded corners to ensure a pleasant touch with your skin. Every log is handpicked during the cutting process of the tree. The frame is upholstered with an airy weave in Canax® straps (polyester coated with a mix of solution dyed PVC and natural hemp) that are UV and mildew resistant.

VIS A VIS
P. 65

DESIGN BY PIERGIORGIO CAZZANIGA

Product code 01718
W 23,2" D 24" H 33,1" SH 17,7"
W 59cm D 61cm H 84cm SH 45cm

TEAK

EARTHBROWN

FRAME

WEAVE

The classic director's chair has been given a leading role in Monica Armani's refined interpretation. This perfectly balanced chair combines high-tech materials and meticulous attention to detail. The lattice back has the natural look and tactile appeal of rope. It is handwoven using an innovative weather-resistant fibre, also used to covers the armrests. The use of powdercoated stainless steel for the arms and backrest allows them to be slim and elegant yet very strong. The slender legs are made of powdercoated aluminium.

REGISTA
P. 89, 91

DESIGN BY MONICA ARMANI

Product code 02018
W 22,8" D 22,4" H33,9" SH 19,3"
W 58cm D 57cm H 86cm SH 49cm

00 - WHITE

10 - LINEN

15 - ASHE

89 - WENGÉ

89 - WENGÉ

76 - GRANITE

FRAME

WEAVE

SEAT

AVAILABLE COLOUR COMBINATIONS,
SEE PRICE LIST.

An elegant seating shell in powder-coated stainless steel is upholstered with an extra-large, vertical weave, developed exclusively by Tribù. A great deal of research resulted in a unique product with a natural and soft appearance, that is nevertheless 100% weatherproof. A combination of textilene and Tricord (polyolefin) is knitted over a tube of EPDM foam without any visible joint. The material is fungi resistant, stain repellent and does not fade.

Product code 05318
W 23,2" D 25,6" H 28" SH 18,7"
W 59cm D 65cm H 71cm SH 47,5cm

10 - LINEN

89 - WENGÉ

TOSCA
P. 39-43, 97, 107

DESIGN BY MONICA ARMANI

Elio is characterized by a softly rounded silhouette that draws inwards to create a cocoon effect. The chair is framed by natural teak which supports the seating shell primarily through the back legs. The handwoven seats in Tricord rope show a rich gradient effect, achieved by weaving multiple colours of yarn into one strand, making each piece of furniture one-of-a-kind.

ELIO
P. 11, 13, 17, 225

DESIGN BY YABU PUSHELBERG

Product code 02518
W 21,6" D 23,6" H 33,1" SH 17,3"
W 55cm D 60cm H 84cm SH 44cm

TEAK

10 - LINEN

30 - MOSS

89 - WENGÉ

FRAME

WEAVE

A cosy design in warm, natural materials. The innovative Tricord® yarn has been designed exclusively for Tribù. The polyester core provides strength and stability, while the combination of nautical fibres (polyolefin) create a surprisingly soft look and touch, ensuring nevertheless resistance to all outside influences : frost, water, fungi and UV-rays. The backs can be replaced separately.

MOOD
P. 119-123, 129

DESIGN BY STUDIO SEGERS

W 24" D 24,4" H31,1" SH 18,4"
W 61cm D62cm H 79cm SH48cm

TEAK

10 - LINEN

30 - MOSS

70 - STONEGREY

85 - EARTHBROWN

89 - WENGÉ

FRAME

WEAVE

The combination of the broad slats and the pure but powerful design, reinvents teak in a modern way. Tribù uses only the very best plantation wood from East-Java. Every log is handpicked during the cutting process of the tree.

KOS
P. 185

DESIGN BY WIM SEGERS

Product code 04034
W 77,2" D 16,3" H 17,7"
W 196cm D 41,5cm H 45cm

TEAK



Minimalism with a playful twist. The legs are welded seamlessly in the length in an angle of 90° and are integrated in the seat in a curved line to create a soft, friendly look.

MIRTHE
P. 209
DESIGN BY FABIAAN VAN SEVEREN

Product code 07436
W 47,2" D 15,7" H 18,5"
W 120cm D 40cm H 47cm

Product code 07434
W 66,9" D 16,9" H 18,5"
W 170cm D 43cm H 47cm

00 - WHITE 10 - LINEN



The Illum bench with its slim legs is kept pure and simple. For the seat in teak only A-grade teak from plantations in East-Java is used. The frame in aluminium has a dual powdercoating to guarantee optimal scratch and UV resistance.

ILLUM
P. 201

DESIGN BY MERCKX & MAES

Product code 06534
W 83,5" D 16,9" H 17,7"
W 212cm D 43cm H 45cm

00 - WHITE 10 - LINEN 89 - WENGÉ

FRAME

TEAK

SEAT



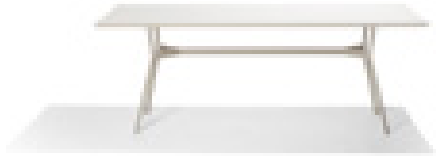
A slender frame in aluminium with nevertheless a very solid stability thanks to the technique of high pressure injection. An epoxy primer finished with an ultra durable polyester coating ensures maximal weather and scratch resistance.

BRANCH
P. 175

DESIGN BY LIEVORE ALTHERR MOLINA

Product code 07652
W 82,6" D 38,6" H 29,5"
W 210cm D 98cm H 75cm

Product code 07654
W 118,1" D 43,3" H 29,5"
W 300cm D 110cm H 75cm



00 - WHITE 10 - LINEN 89 - WENGÉ

BRANCH TEAK

DESIGN BY LIEVORE ALTHERR MOLINA

Product code 07652-T
W 82,6" D 38,6" H 29,5"
W 210cm D 98cm H 75cm

Product code 07654-T
W 118,1" D 43,3" H 29,5"
W 300cm D 110cm H 75cm



00 - WHITE 10 - LINEN 89 - WENGÉ

FRAME

TEAK

TOP

A slender frame in aluminium with nevertheless a very solid stability thanks to the technique of high pressure injection. An epoxy primer finished with an ultra durable polyester coating ensures maximal weather and scratch resistance. The contract tables exist in a square and a round design.

BRANCH
P. 179, 183

DESIGN BY LIEVORE ALTHERR MOLINA

Product code 07661
Ø 27,5" H 29,5" / Ø 70cm H 75cm

Product code 07660
Ø 31,5" H 29,5" / Ø 80cm H 75cm

Product code 07662
Ø 49,2" H 29,5" / Ø 125cm H 75cm

Product code 07671
W 31,5" D 31,5" H 29,5"
W 80cm D 80cm H 75cm

Product code 07670
W 35,4" D 35,4" H 29,5"
W 90cm D 90cm H 75cm



00 - WHITE 10 - LINEN 89 - WENGÉ

FRAME

00 - WHITE 10 - LINEN 89 - WENGÉ TEAK GRANITE

TOP

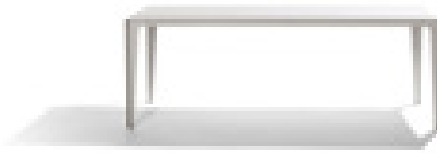
Minimalism with a playful twist. The legs are welded seamlessly in the length in an angle of 90° and are integrated in the top in a curved line to create a soft, friendly look. The frame, made out of one aluminium plate with a 6 mm thickness, is powdercoated with ultra- durable structure lacquer for optimal weather and scratch resistance and a nice matte look.

MIRTHE
P. 209

DESIGN BY FABIAAN VAN SEVEREN

Product code 07452
W 82,6" D 37,4" H 29,9"
W 210cm D 95cm H 76cm

Product code 07454
W 118,1" D 43,3" H 29,9"
W 300cm D 110cm H 76cm



00 - WHITE 10 - LINEN

The Illum table with its slim legs is kept pure and simple. It is available in two widths: the standard 98 cm and a more narrow version of 71 cm, the ideal solution for smaller patios and balconies. The frame in aluminium has a dual powdercoating to guarantee optimal xscratch and UV resistance. The ceramic top is coloured in the mass and laminated on a layer of glass according to a specially developed lamination process, ensuring extra safety. For the table top in teak Tribù uses only the very best plantation wood from East-Java.

ILLUM
P. 89, 145, 151, 157, 199, 201

DESIGN BY MERCKX & MAES

Product code 06573
W 39,4" D 39,4" H 29,5"
W 100cm D 100cm H 76cm

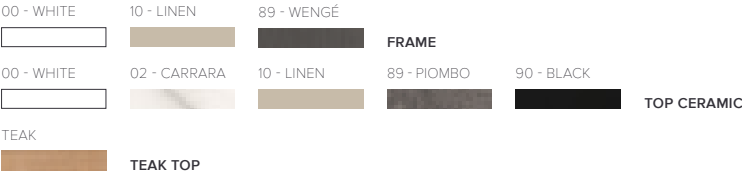
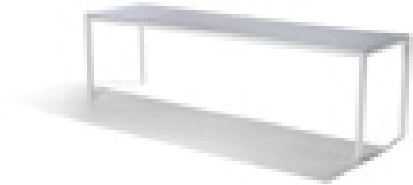
Product code 06550
W 59,8" D 39,4" H 29,5"
W 152cm D 100cm H 76cm

Product code 06552
W 83,5" D 39,4" H 29,5"
W 212cm D 100cm H 76cm

Product code 06554
W 105,1" D 39,4" H 29,5"
W 267cm D 100cm H 76cm

Product code 06552xs
W 83,5" D 27,9" H 29,5"
W 212cm D 71cm H 76cm

Product code 06554xs
W 105,1" D 27,9" H 29,5"
W 267cm D 71cm H 76cm



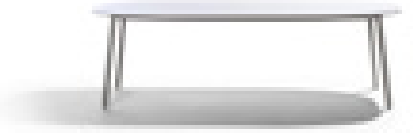
The Tosca tabletop consists of ceramic laminated on glass, water jetted in an oval shape and then CNC-milled. The delicately clouded pattern is coloured in the mass. Together with the round shape of the table legs in powdercoated stainless steel this exceptional oval shape gives the table a very high-end look.

TOSCA
P. 97, 107

DESIGN BY MONICA ARMANI

Product code 05355
W 94,5" D 38,6" H 29,1
W 240cm D 98cm H 74cm

Product code 05354
W 117,3" D 38,6" H 29,1"
W 298cm D 98cm H 74cm



The teak Illum table maintains the slender proportions of the aluminium version, using the finest teak from carefully managed plantations in East Java. The table top connects with the legs in a smooth curve, the corners being hand-sculpted and sanded from a solid piece of wood. There are no hard edges on this Illum table – all contours are rounded for a soft, pleasing look and feel.

ILLUM TEAK
P. 11, 13, 17, 119, 123

DESIGN BY MERCKX & MAES

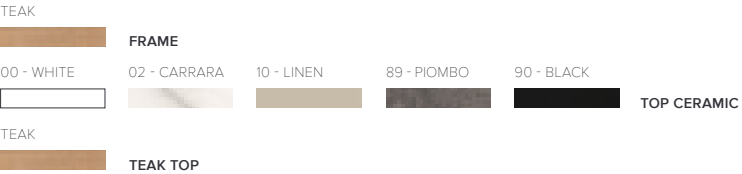
Product code 06573-T
W 39,4" D 39,4" H 29,5"
W 100cm D 100cm H 76cm

Product code 06550-T
W 59,8" D 39,4" H 29,5"
W 152cm D 100cm H 76cm

Product code 06552-T
W 83,5" D 39,4" H 29,5"
W 212cm D 100cm H 76cm

Product code 06554-T
W 105,1" D 39,4" H 29,5"
W 267cm D 100cm H 76cm

Product code 06552xs-T
W 83,5" D 28,7" H 29,5"
W 212cm D 73cm H 76cm



The combination of the broad slats and the pure but powerful design, reinvents teak in a modern way. Tribù uses only the very best plantation wood from East-Java. Every log is handpicked during the cutting process of the tree.

KOS

P. 185

DESIGN BY WIM SEGERS

Product code 04073
W 38,6" D 38,6" H 29,9"
W 98cm D 98cm H 76cm

Product code 04052
W 88,2" D 39,4" h 29,9"
W 224cm D 100cm H 76cm

Product code 04053
W 104,7" D 39,4" H 29,9"
W 266cm D 100cm H 76cm

Product code 04054
W 121,3" D 43,3" H 29,9"
W 308cm D 110cm H 76cm



The Vis à Vis table is characterized by solid square slats with slightly rounded corners. The teak is of the best quality you can find. Only A-grade wood, grown in sustainably managed plantations in East-Java is used. Every log is handpicked during the cutting process of the tree. The basis of the table concept are tables of 99x99cm that can be attached to each other with invisible profiles to an unlimited length.

VIS A VIS

P. 65, 129, 161

DESIGN BY PIERGIORGIO CAZZANIGA

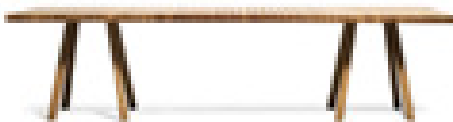
Product code 01773
W 38,9" D 38,9" H 29,7"
W 99cm D 99cm H 75,5cm

Product code 01753
W 118,1" D 38,9" H 29,7"
W 300cm D 99cm H 75,5cm

Product code 01754
W 157,5" D 38,9" H 29,7"
W 400cm D 99cm H 75,5cm

Product code 01755
W 196,8" D 38,9" H 29,7"
W 500cm D 99cm H 75,5cm

From a length of 500cm or more, a third leg will be added.



Still water disturbed by a breeze is the visual reference for the T-Table. The light-reflective, hand crafted glazed lava stone top mirrors the sky and adds a unique quality with its naturally occurring imperfections. The glazing, adorned with a subtle crackle finish, makes the stone heat, water, UV and stain resistant. The pure and simple form of the T-Table is designed to fit harmoniously with other furniture in the Tribù collection.

T-TABLE

P. 15, 19, 87

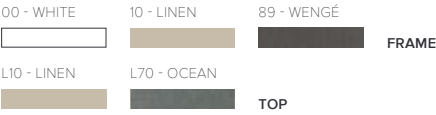
DESIGN BY MARC MERCKX

Product code D2160
Ø 35,4" H 29,5"
Ø 90cm H 75cm

Product code D2162
Ø 49,2" H 29,5"
Ø 125cm H 75cm

Product code D2161
Ø 35,4" H 26,4"
Ø 90cm H 67cm

Product code D2163
Ø 49,2" H 26,4"
Ø 125cm H 67cm



The elegant Tao table collection is a lesson in perfectly balanced contrasts – bold sculptural pedestals and slim table tops that are pleasing to the touch. Designer Monica Armani has used refined lightened concrete to give a look of elegant solidity. The dining table has a central pedestal, which supports a finely milled round table top. The Tao tables come in natural linen and warm wengé tones to create striking centrepieces for any setting.

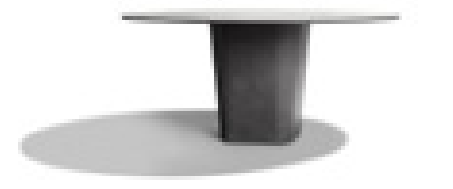
TAO

P. 36-43, 225

DESIGN BY MONICA ARMANI

Product code 01666
Ø 63" H29,1"
Ø 160cm H74cm

Product code 01668
Ø 70,9" H29,1"
Ø 180cm H74cm



Light and airy, the Nodi chair's form and silhouette are characterized by twisted-interlaced rope in weather resistant Canax®, stretched across a precise geometric wireframe. Pared back, refined proportions and a minimalist approach to materiality lend a casual lightness to the collection. The slim profile of the arm is angled slightly inward in a welcoming gesture.

Product code 01912
W 23,6" D 28,3" H 28" SH 13,8"
W 60cm D 72cm H 71cm SH 35cm

00 - WHITE	89 - WENGÉ	FRAME
00 - OFF WHITE	10 - LINEN	WEAVE

AVAILABLE COLOUR COMBINATIONS.
SEE PRICE LIST.



NODI
P. 75

DESIGN BY YABU PUSHELBERG

CTR is characterised by a tube in powdercoated stainless steel that follows the outline of the chair in one continuous line. The woven backrest is attached at only 2 points to the frame, resulting in a flexible backrest that ensures an outstanding back support. The yarn in polyolefin resists all weather conditions, but has nevertheless a surprisingly natural look & feel. The seat is upholstered with a water-repellent cushion which can be easily removed.

Product code 01102
W 31,1" D 30,3" H 29,9" SH 17,7"
W 79cm D 77cm H 76cm SH 45cm

00 - WHITE	89 - WENGÉ	FRAME
10 - LINEN	89 - WENGÉ	WEAVE

AVAILABLE COLOUR COMBINATIONS.
SEE PRICE LIST.



CTR

DESIGN BY PIERGIORGIO CAZZANIGA

The combination of the broad slats and the pure but powerful design of the Kos easy chair, reinvents teak in a modern way. Thanks to the ergonomically formed back, the chairs provide an excellent seating comfort. Tribu uses only the very best plantation wood from East-Java. Every log is handpicked during the cutting process of the tree.

Product code 04012
W 24,0" D 27,6" H 28,3" SH 14,2"
W 61cm D 70cm H 72cm SH 36cm

Product code footrest 04090
W 17,7" D 16,5" H 9,8"
W 45cm D 42cm H 25cm



KOS
P. 187

DESIGN BY WIM SEGERS



Minimalism with a playful twist. The chair has been designed from a single surface and is made of 6mm bent plate aluminium which creates the effect of one flowing line. The easy chair is adjustable into 2 positions.

Product code 07412
W 24,0" D 30,7"
H 31,1/36,2" SH 13/15"
W 61cm D 78cm
H 79/92cm SH 33/38cm

Productcode footrest 07490
W 20,5" D 17,7" H 12,6"
W 52cm D 45cm H 32cm

00 - WHITE	10 - LINEN



MIRTHE
P. 207

DESIGN BY WIM SEGERS

A collection of impeccable class and strong charisma. The straight lines of the aluminium frame contrast beautifully with the flowing, curved seat in Batyline®. The frame is powdercoated with ultra-durable structure lacquer for a nice matte look. Batyline® from Ferrari is renowned for its exceptional tear strength and dimensional stability, ensuring it will keep its shape along with its color.

Product code 05912
W 22,8" D 27,6"H 28,3" SH 14,2"
W 58cm D 70cm H 72cm SH 36cm

Product code footrest 05990
W 20,1" D 18,5" H 13,8"
W 51cm D 47cm H 35cm



NATAL ALU
P. 147

DESIGN BY WIM SEGERS

The classic director's chair has been given a leading role in Monica Armani's refined interpretation. This perfectly balanced chair combines high-tech materials and meticulous attention to detail. The lattice back has the natural look and tactile appeal of rope. It is handwoven using an innovative weather-resistant fibre, also used to covers the armrests. The use of powdercoated stainless steel for the arms and backrest allows them to be slim and elegant yet very strong. The slender legs are made of powdercoated aluminium.

Product code 02012
W 23,2" D 24,4" H 31,5" SH 16,5"
W 59cm D 62cm H 80cm SH 42cm

00 - WHITE	89 - WENGÉ	FRAME
10 - LINEN	89 - WENGÉ	WEAVE
15 - ASHE	76 - GRANITE	SEAT

REGISTA
P. 29, 83, 87

DESIGN BY MONICA ARMANI



A cosy design in warm, natural materials. The innovative Tricord® yarn has been designed exclusively for Tribù. The polyester core provides strength and stability, while the combination of nautical fibres (polyolefin) create a surprisingly soft look and touch, ensuring nevertheless resistance to all outside influences : frost, water, fungi and UV-rays. The backs can be replaced separately.

MOOD CLUB CHAIR
P. 115, 117, 127

DESIGN BY STUDIO SEGERS



Product code 06202
W 35,8" D 31,9" H 27,2" SH 16,9"
W 91cm D 81cm H 69cm SH 43cm

TEAK

FRAME

10 - LINEN

30 - MOSS

70 - STONEGREY

85 - EARTHBROWN

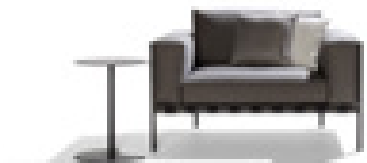
89 - WENGÉ

WEAVE

A subtle frame with attractive, curved armrests contrasts beautifully with the volume of the outdoor cushions which are supported by a weave in broad textilene straps. The aluminium frame of the armchair is powdercoated with ultra durable structure lacquer. The outdoor cushions can be left outside, even in the rain. The ventilating filling is covered with a waterproof, laminated polypropylene cover which is water resistant. All stitches have an extra inside cover to prevent water from penetrating.

NATAL ALU SOFA
P. 133

DESIGN BY WIM SEGERS



Product code 05902
W 36,6" D 31,9" H 23,6" SH 15,7"
W 93cm D 81cm H 60cm SH 40cm

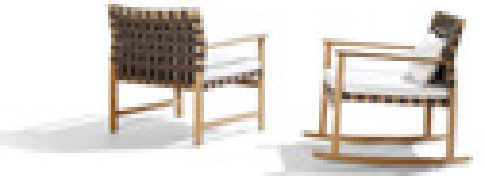
00 - WHITE

89 - WENGÉ

A combination of excellent ergonomic seating comfort with a soft, natural look. The teak, coming from plantations in East-Java, has rounded corners to ensure a pleasant touch with your skin. Every log is handpicked during the cutting process of the tree. The frame is upholstered with an airy weave in Canax® straps (polyester coated with a mix of solution dyed PVC and natural hemp) that are UV and mildew resistant.

VIS A VIS
P. 63, 67

DESIGN BY PIERGIORGIO CAZZANIGA



Product code club chair 01712
W 28" D 28,3" H 29,9" SH 14,6"
W 71cm D 72cm H 76cm SH 37cm

Product code rocking chair 01713
W 24,4" D 32,3" H 29,5" SH 14,2"
W 62cm D 82cm H 75cm SH 36cm

A cosy design in warm, natural materials. The innovative Tricord® yarn has been designed exclusively for Tribù. The polyester core provides strength and stability, while the combination of nautical fibres (polyolefin) create a surprisingly soft look and touch, ensuring nevertheless resistance to all outside influences : frost, water, fungi and UV-rays. The backs can be replaced separately.

MOOD LOUNGE CHAIR

DESIGN BY STUDIO SEGERS



Product code 06203
W 33,5" D 31,9" H 27,2" SH 16,9"
W 85cm D 81cm H 69cm SH 43cm

TEAK

FRAME

10 - LINEN

30 - MOSS

70 - STONEGREY

85 - EARTHBROWN

89 - WENGÉ

WEAVE

Pure Sofa reduces design to the essence, devoid of all excess: pure simplicity and elegance. Tribù uses only the very best plantation wood from East-Java. Every log is handpicked during the cutting process of the tree. Cushions are available in 2 different designs.

PURE SOFA
P. 191

DESIGN BY ANDREI MUNTEANU



Product code 01202s
W 36,6" D 38,6" H 24,8" SH 16,1"
W 93cm D 98cm H 63cm SH 41cm

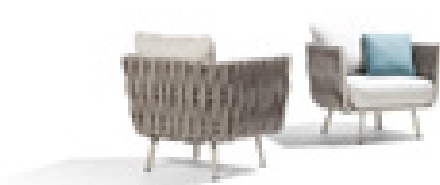
Product code 01202
W 49,6" D 38,6" H 24,8" SH 16,1"
W 126cm D 98cm H 63cm SH 41cm

An elegant seating shell in powder-coated stainless steel is upholstered with an extra-large, vertical weaving, developed exclusively by Tribù. A great deal of research resulted in a unique product with a natural and soft appearance, that is nevertheless 100% weatherproof. A combination of textilene and Tricord (polyolefin) is knitted over a tube of EPDM foam without any visible joint. The material is fungi resistant, stain repellent and does not fade.

TOSCA

P. 101, 103

DESIGN BY MONICA ARMANI



Product code 05302
W 34,6" D 29,1" H 27,2" SH 15,7"
W 88cm D 74cm H 69cm SH 40cm

10 - LINEN

89 - WENGÉ

Elio is characterized by a softly rounded silhouette that draws inwards to create a cocoon effect. This intimate feeling is even more enhanced by the higher back support. The chair is framed by natural teak which supports the seating shell primarily through the back legs. The handwoven seats in Tricord rope show a rich gradient effect, achieved by weaving multiple colours of yarn into one strand, making each piece of furniture one-of-a-kind.

ELIO HIGH BACK LOUNGE CHAIR
P. 7

DESIGN BY YABU PUSHELBERG



Product code 02520
W 27,9" D 34,7" H 39,8" SH 12,6"
W 71cm D 88cm H 101cm SH 32cm

TEAK

FRAME

10 - LINEN

30 - MOSS

89 - WENGÉ

WEAVE

Let yourself slide into the Branch beach chair, which combines simplicity with elegance. An ingenious hidden blocking mechanism leaves the chair's fluid lines uninterrupted, creating the illusion of a floating frame. The cast aluminium frame with dual powdercoating is as light as it is strong, having passed the rigorous Bifma X5 test. The comfortable sling seat in Batyline has exceptional tear strength and UV resistance. It is easily replaceable and also comes in a range of weather resistant acrylic fabrics. (A72, A89, 15, 42, B04, B16, B17, B18, B19, B22, B50, B51, B52, B53, B84, B98)

BRANCH BEACH CHAIR

P. 171, 173, 181

DESIGN BY LIEVORE ALTHERR MOLINA



Product code 07612
W 22,8" D 35,4" H35,8" SH 14,6"
W 58cm D 90cm H 91cm SH 37cm

00 - WHITE

10 - LINEN

89 - WENGÉ

Elio is characterized by a softly rounded silhouette that draws inwards to create a cocoon effect. The chair is framed by natural teak which supports the seating shell primarily through the back legs. The handwoven seats in Tricord rope show a rich gradient effect, achieved by weaving multiple colours of yarn into one strand, making each piece of furniture one-of-a-kind.

ELIO EASY CHAIR

P. 9, 15, 19, 51, 53, 137

DESIGN BY YABU PUSHELBERG



Product code 02512
W 26,4" D 30" H 31,5" SH 15"
W 67cm D 76cm H 80cm SH 38cm

TEAK

FRAME

10 - LINEN

30 - MOSS

89 - WENGÉ

WEAVE

NOMAD
P. 23, 25, 27, 49, 223

DESIGN BY MONICA ARMANI



Product code 05012
W 29,1" D 27,2" H 27,6" SH 14,4"
W 74cm D 69cm H 70cm SH 36,5cm

CTR is characterised by a tube in powdercoated stainless steel that follows the outline of the chair in one continuous line. The woven backrest is attached at only 2 points to the frame, resulting in a flexible backrest that ensures an outstanding back support. The yarn in polyolefin resists all weather conditions, but has nevertheless a surprisingly natural look & feel. The seat is upholstered with a water-repellent cushion which can be easily removed.

Product code 01108
W 61,4" D 30,3" H 29,9" SH 17,7"
W 156cm D 77cm H 76cm SH 45cm

00 - WHITE	89 - WENGÉ	FRAME
10 - LINEN	89 - WENGÉ	WEAVE

CTR
P. 151, 155

DESIGN BY PIERGIORGIO CAZZANIGA



AVAILABLE COLOUR COMBINATIONS,
SEE PRICE LIST.

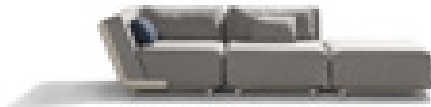
An outdoor sofa characterised by extra thick, UV-resistant outdoor cushions, kept in place by subtle, varnished aluminium shells. You can arrange your own personal concept simply by using the three basic elements. The dryfoam cushion fillings have an open cell structure, allowing air to circulate freely. Water passes through the filling but dries quickly thanks to the large open pores.

Product code extension 07400
W 33,4" D 41,3" H 26,4" SH 15,7"
W 85cm D 105cm H 67cm SH 40cm

Product code corner 07401
W 41,3" D 41,3" H 26,4" SH 15,7"
W 105cm D 105cm H 67cm SH 40cm

Product code pouf 07492
W 33,5" D 32,7" SH 15,7"
W 85cm D 83cm SH 40cm

00 - WHITE	10 - LINEN



MIRTHE SOFA
P. 213, 215

DESIGN BY STUDIO SEGERS

An elegant seating shell in powder-coated stainless steel is upholstered with an extra-large, vertical weaving, developed exclusively by Tribù. A great deal of research resulted in a unique product with a natural and soft appearance, while being nevertheless 100% weatherproof. A combination of textilene and Tricord (polyolefin) is knitted over a tube of EPDM foam without any visible joint. The material is fungi resistant, stain repellent and does not fade.

Product code 05308
W 91,7" D 27,2 H 30,7" SH 15,7"
W 163cm D 74cm H 69cm SH 40cm

Product code 05309
W 91,7" D 29,1" H 27,2" SH 15,7"
W 233cm D 74cm H 69cm SH 40cm

10 - LINEN	89 - WENGÉ

TOSCA
P. 87, 95, 107, 109, 111

DESIGN BY MONICA ARMANI



A cosy design in warm, natural materials. The innovative Tricord® yarn has been designed exclusively for Tribù. The polyester core provides strength and stability, while the combination of nautical fibres (polyolefin) create a surprisingly soft look and touch, ensuring nevertheless resistance to all outside influences : frost, water, fungi and UV-rays. The backs can be replaced separately.

Product code 06208
W 58,7" D 35,4" H 27,2" SH 16,9"
W 159cm D 90cm H 69cm SH43cm

Product code 06209
W 91,7" D 35,4" H 27,2" SH 16,9"
W 233cm D 90cm H 69cm SH 43cm

TEAK	FRAME				
10 - LINEN	30 - MOSS	70 - STONEGREY	85 - EARTHBROWN	89 - WENGÉ	WEAVE



MOOD SOFA
P. 117, 125, 127

DESIGN BY STUDIO SEGERS

Elio is characterized by a softly rounded silhouette that draws inwards to create a cocoon effect. The sofa is framed by natural teak which supports the seating shell primarily through the back legs. The handwoven seats in Tricord rope show a rich gradient effect, achieved by weaving multiple colours of yarn into one strand, making each piece of furniture one-of-a-kind.

Product code 02508
W 60,6" D 35" H 32,5" SH 12,2"
W 154cm D 89cm H 82,5cm SH 31cm

TEAK	FRAME		
10 - LINEN	30 - MOSS	89 - WENGÉ	WEAVE



ELIO SOFA
P. 9

DESIGN BY YABU PUSHELBERG

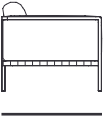
A subtle frame with attractive, curved armrests contrasts beautifully with the volume of the outdoor cushions which are supported by a weave in broad textilene straps. Thirteen different modules compose the outdoor sofa of your liking. The aluminium frame of the sofa is powdercoated with ultra durable structure lacquer. The outdoor cushions can be left outside, even in the rain. The ventilating filling is covered with a laminated polypropylene cover which is water resistant. All stitches have an extra inside cover to prevent water from penetrating.

NATAL ALU SOFA
P. 135, 137, 143

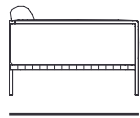
DESIGN BY WIM SEGERS



00 - WHITE
89 - WENGÉ

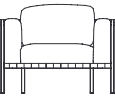


31,9" 81 CM
REGULAR

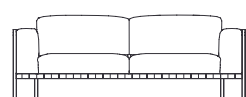


41,3" 105 CM
DEEP

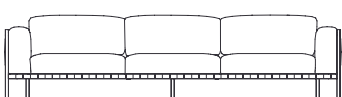
STAND ALONE SOFAS



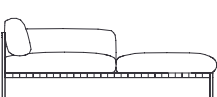
1-seater 05802
W 36,6" D 31,9" H 23,6 SH 15,7"
W 93cm D 81cm H 60cm SH 40cm



Sofa 2-seater 05808S/05808D
W 74,4" H 23,6" SH 15,7"
W 189cm H 60cm SH 40cm

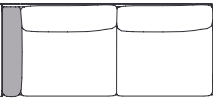


Sofa 3-seater 05809S/05809D
W 107,5" H 23,6" SH 15,7"
W 273cm H 60cm SH 40cm

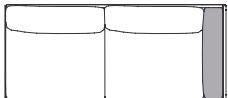


Meridienne Right 05868
Meridienne Left 05869
W 39" D74" H 23,6" SH 15,7"
W 99cm D 188cm H 60cm SH 40cm

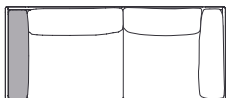
MODULAR SOFAS (cannot stand alone)



Right arm extension 189cm
05838RS/05838RD
W 74,4" H 23,6" SH 15,7"
W 189cm H 60cm SH 40cm



Left arm extension 189cm
05838LS/05838LD
W 74,4" H 23,6" SH 15,7"
W 189cm H 60cm SH 40cm



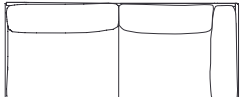
Right arm corner module 189cm
05848RS/05848RD
W 74,4" H 23,6" SH 15,7"
W 189cm H 60cm SH 40cm



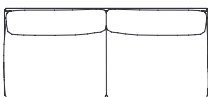
Left arm corner module 189cm
05848LS/05848LD
W 74,4" H 23,6" SH 15,7"
W 189cm H 60cm SH 40cm



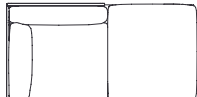
Right corner extension 189cm
05858RS/05858RD
W 74,4" H 23,6" SH 15,7"
W 189cm H 60cm SH 40cm



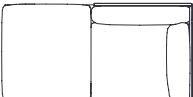
Left corner extension 189cm
05858LS/05858LD
W 74,4" H 23,6" SH 15,7"
W 189cm H 60cm SH 40cm



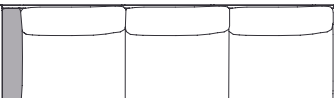
Centre Module 189cm
05828S/05828D
W 74,4" H 23,6" SH 15,7"
W 189cm H 60cm SH 40cm



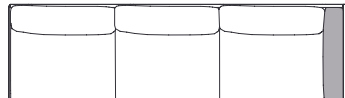
Meridienne left 05803
W 39" D74" H 23,6" SH 15,7"
W 99cm D 188cm H 60cm SH 40cm



Meridienne right 05803
W 39" D74" H 23,6" SH 15,7"
W 99cm D 188cm H 60cm SH 40cm



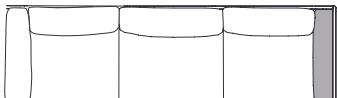
Right arm extension 273cm 05839RS/05839RD
W 107,5" H 23,6" SH 15,7"
W 273cm H 60cm SH 40cm



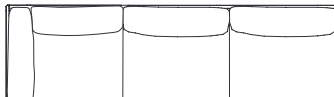
Left arm extension 273cm 05839LS/05839LD
W 107,5" H 23,6" SH 15,7"
W 273cm H 60cm SH 40cm



Right arm corner module 273cm 05849RS/05849RD
W 107,5" H 23,6" SH 15,7"
W 273cm H 60cm SH 40cm



Left arm corner module 273cm 05849LS/05849LD
W 107,5" H 23,6" SH 15,7"
W 273cm H 60cm SH 40cm



Right corner extension 273cm 05859RS/05859RD
W 107,5" H 23,6" SH 15,7"
W 273cm H 60cm SH 40cm



Left corner extension 273cm 05859LS/05859LD
W 107,5" H 23,6" SH 15,7"
W 273cm H 60cm SH 40cm



Centre Module 273cm 05829S/05829D
W 107,5" H 23,6" SH 15,7"
W 273cm H 60cm SH 40cm

Slender, teak platforms support comfortable outdoor cushions without any visible back or arm structure. Tribù uses only the very best plantation wood from East-Java. Every log is handpicked during the cutting process of the tree. The cushions are supported by brackets in stainless steel 304L and can be left outside, even in the rain. The ventilating filling is covered with a waterproof, laminated polypropylene cover which is water resistant. All stitches have an extra inside cover to prevent water from penetrating. The simple, modular system allows for endless compositions from a small meridienne sofa to a large corner sofa with sidetables

TEAK

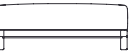


VIS A VIS SOFA
P. 47-57

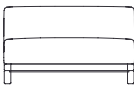
DESIGN BY PIERGIORGIO CAZZANIGA



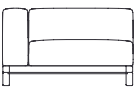
MODULAR ELEMENTS



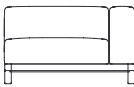
Pouf module 01792
W 39" D 39" SH 16,1"
W 99cm D 99cm SH 41cm



Extension module single 01700
W 39" D 39" H 16,1" SH 16,1"
W 99cm D 99cm H 63cm SH 41cm



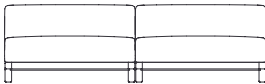
Corner module right arm 01701R
W 39" D 39" H 16,1" SH 16,1"
W 99cm D 99cm H 63cm SH 41cm



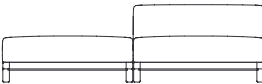
Corner module left arm 01701L
W 39" D 39" H 16,1" SH 16,1"
W 99cm D 99cm H 63cm SH 41cm



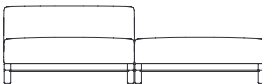
Centre module 01708
W 78" D 39" H 24,8" SH 16,1"
W 198cm D 99cm H 63cm SH 41cm



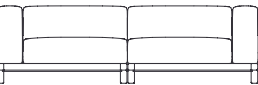
Extension module double 01728
W 78" D 39" H 24,8" SH 16,1"
W 198cm D 99cm H 63cm SH 41cm



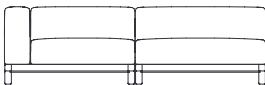
Extension pouf right 01706R
W 78" D 39" H 24,8" SH 16,1"
W 198cm D 99cm H 63cm SH 41cm



Extension pouf left 01706L
W 78" D 39" H 24,8" SH 16,1"
W 198cm D 99cm H 63cm SH 41cm



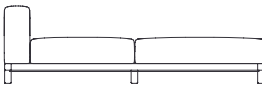
2-seater 01709
W 78" D 39" H 24,8" SH 16,1"
W 198cm D 99cm H 63cm SH 41cm



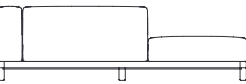
Right arm module 01738R
W 78" D 39" H 24,8" SH 16,1"
W 198cm D 99cm H 63cm SH 41cm



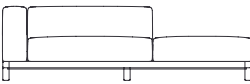
Left arm module 01738L
W 78" D 39" H 24,8" SH 16,1"
W 198cm D 99cm H 63cm SH 41cm



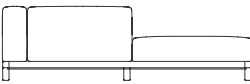
Daybed module 01742
W 78" D 39" H 24,8" SH 16,1"
W 198cm D 99cm H 63cm SH 41cm



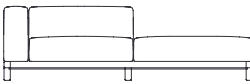
Meridienne right long arm 01704
W 39" D 78" H 24,8" SH 16,1"
W 198cm D 99cm H 63cm SH 41cm



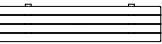
Meridienne left long arm 01703
W 39" D 78" H 24,8" SH 16,1"
W 198cm D 99cm H 63cm SH 41cm



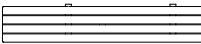
Meridienne right short arm 01704s
W 39" D 78" H 24,8" SH 16,1"
W 198cm D 99cm H 63cm SH 41cm



Meridienne left short arm 01703s
W 39" D 78" H 24,8" SH 16,1"
B 198cm D 99cm H 63cm SH 41cm



Border small 01796B
W 39" D 8,5" H 7,1"
W 99cm D 21,5cm H 18cm



Border large 01797B
W 47,6" D 8,5" H 7,1"
W 121cm D 21,5cm H 18cm

Pure Sofa reduces design to the essence, devoid of all excess: pure simplicity and elegance. This modular outdoor sofa consists of five elements that combine easily into a corner sofa, a long couch or a lounge bed. Tribù uses only the very best plantation wood from East-Java. Every log is handpicked during the cutting process of the tree. Cushions are available in 2 different designs.

PURE SOFA
P. 189-193

DESIGN BY ANDREI MUNTEANU

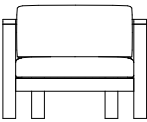


CASUAL STYLE

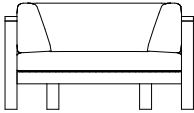


MIAMI STYLE

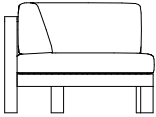
TEAK



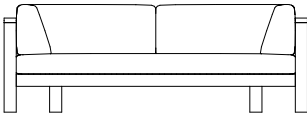
Armchair 93cm 01202s
W 36,3" D 38,6" H 24,8" SH 16,1"
W 93cm D 98cm H 63cm SH 41cm



Armchair 126cm 01202
W 49,6" D 38,6" H 24,8" SH 16,1"
W 126cm D 98cm H 63cm SH 41cm



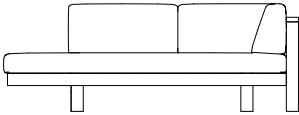
Corner 01201
W 38,6" D 38,6" H 24,8" SH 16,1"
W 98cm D 98cm H 63cm SH 41cm



Armchair 200cm 01207
W 78,7" D 38,6" H 24,8" SH 16,1"
W 200cm D 98cm H 63cm SH 41cm



Right arm 01204
W 76" D 38,6" H 24,8" SH 16,1"
W 193cm D 98cm H 63cm SH 41cm



Left arm 01203
W 76" D 38,6" H 24,8" SH 16,1"
W 193cm D 98cm H 63cm SH 41cm

Curl up and relax on the modular Senja sofa. Combine a one-, two- or three-seater module with high or low arms and keep everything you need to hand with an integrated table, console or side table in teak or glazed lava stone. Senja comes with regular seat cushions or an ultra-deep variant to curl up on. With a choice of 110 weather-resistant fabrics, Senja lets you create the sofa you want, tailored to your personal style.

10 - LINEN 89 - WENGÉ

SENJA SOFA
P. 21-23, 27-35

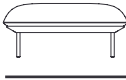
DESIGN BY STUDIO SEGERS



REGULAR (S) / DEEP (D)



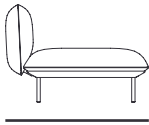
28,7"
73 CM



38,2"
97 CM

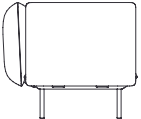


36,2"
92 CM

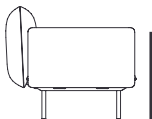


45,7"
116 CM

HIGH ARMREST / LOW ARMREST

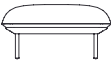


30,3"
77 CM

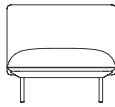


24,4"
62 CM

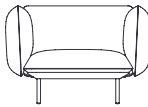
MODULAR ELEMENTS



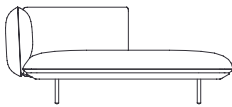
Pouf module S 023200/D 023210
W 33,9" H 16,5" SH 16,5"
W 86cm H 42cm SH 42cm



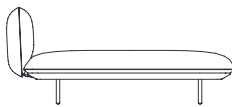
Single module S 023201/D 023211
W 33,9" H 30,3" SH 16,5"
W 86cm H 77cm SH 42cm



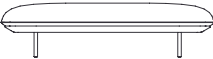
1-seater SHA 023202/SLA 023203
W 48,8" H 30,3" SH 16,5"
W 124cm H 77cm SH 42cm



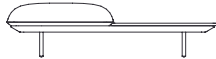
Meridienne left deep DHA 023301/DLA 023302
Meridienne right deep DHA 023401/DLA 023402
W 74" D 45,7" H 30,3" SH 16,5"
W 188cm D 116cm H 77cm SH 42cm



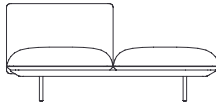
Daybed deep 023403
W s74" D 45,7" H 30,3" SH 16,5"
W 188cm D 116cm H 77cm SH 42cm



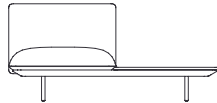
Double pouf module S 023801/D 023851
W 65,7" H 16,5" SH 16,5"
W 167cm H 42cm SH 42cm



Pouf+table S 023802/D 023852
W 65,7" H 16,5" SH 16,5"
W 167cm H 42cm SH 42cm



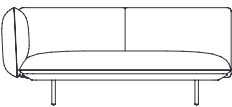
Single module + pouf S 023803/D 023853
W 65,7" H 30,3" SH 16,5"
W 167cm H 77cm SH 42cm



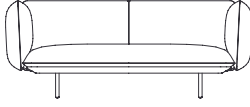
Single module + table S 023804/D 023854
W 65,7" H 30,3" SH 16,5"
W 167cm H 77cm SH 42cm



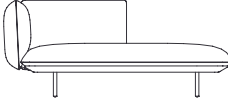
Double module S 023805/D 023855
W 65,7" H 30,3" SH 16,5"
W 167cm H 77cm SH 42cm



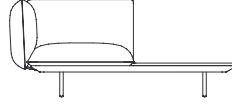
Right corner SHA 023806/ SLA 023808
Left corner SHA 023807/ SLA 023809
Right corner DHA 023856/DLA 023858
Left corner DHA 023857/DLA 023859
W 74" H 30,3" SH 16,5"
W 188cm H 77cm SH 42cm



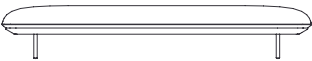
2-seater SHA 023810/SLA 023811
2-seater DHA 023860/SLA 023861
W 81,9" H 30,3" SH 16,5"
W 208cm H 77cm SH 42cm



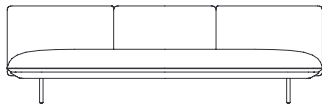
Right corner + pouf SHA 023814/ SLA 023816
Left corner + pouf SHA 023815/ SLA 023817
Right corner + pouf DHA 023864/DLA 023866
Left corner + pouf DHA 023865/DLA 023867
W 74" H 30,3" SH 16,5"
W 188cm H 77cm SH 42cm



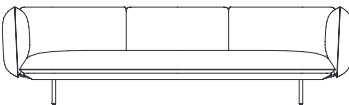
Right corner + table SHA 023818/ SLA 023820
Left corner + table SHA 023819/ SLA 023821
Right corner + table DHA 023868/DLA 023870
Left corner + table DHA 023869/DLA 023871
W 74" H 30,3" SH 16,5"
W 188cm H 77cm SH 42cm



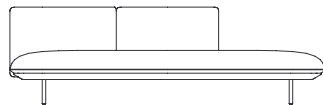
Triple pouf module S 023901/D 023951
W 99,6" H 16,5" SH 16,5"
W 253cm H 42cm SH 42cm



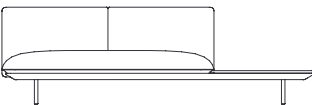
Triple module S 023902/D 023952
W 99,6" H 30,3" SH 16,5"
W 253cm H 77cm SH 42cm



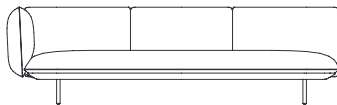
3-seater S 023903/D 023953
W 115,4" H 30,3" SH 16,5"
W 293cm H 77cm SH 42cm



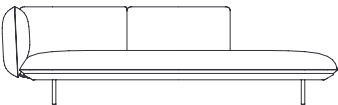
Right extension+pouf S 023907/D 023957
Left extension+pouf S 023908/D 023958
W 99,6" H 30,3" SH 16,5"
W 253cm H 77cm SH 42cm



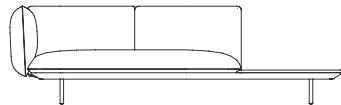
Right extension+table S 023909/D 023959
Left extension+table S 023910/D 023960
W 99,6" H 30,3" SH 16,5"
W 253cm H 77cm SH 42cm



Right corner SHA 023911/ SLA 023913
Left corner SHA 023912/ SLA 023914
Right corner + pouf DHA 023961/DLA 023963
Left corner DHA 023962/DLA 023964
W 107,5" H 30,3" SH 16,5"
W 273cm H 77cm SH 42cm



Right corner + pouf SHA 023915/ SLA 023917
Left corner + pouf SHA 023916/ SLA 023918
Right corner + pouf DHA 023965/DLA 023967
Left corner + pouf DHA 023966/DLA 023968
W 107,5" H 30,3" SH 16,5"
W 273cm H 77cm SH 42cm



Right corner + table SHA 023919/ SLA 023921
Left corner + table SHA 023920/ SLA 023922
Right corner + table DHA 023969/DLA 023971
Left corner + table DHA 023970/DLA 023972
W 107,5" H 30,3" SH 16,5"
W 273cm H 77cm SH 42cm

An elegant series of coffee tables that, thanks to the variety of colours and materials, can complement different sofa types. The slightly tapered, slimline legs in powdercoated aluminium combine with a circular or rectangular tabletop and are available in different heights. This offers the opportunity to create enriching combinations with different colours and different organic materials such as teak, granite and lightened concrete.

BRANCH
P. 109

DESIGN BY LIEVORE ALTHERR MOLINA

Product code 07680/07690/07681
Ø 19,7" H 10,6/13,8/16,9"
Ø 50cm H 27/35/43cm

Product code 07682/07691/07683
Ø 23,6" H 10,6/13,8/16,9"
Ø 60cm H 27/35/43cm

Product code 07684/07692/07685
Ø 27,6" H 10,6/13,8/16,9"
Ø 70cm H 27/35/43cm

Product code 07686/07693/07687
Ø 33,5" H 10,6/13,8/16,9"
Ø 85cm H 27/35/43cm

Product code 07688/07689
W 60,2" D 33,5" H 10,6/13,8"
W 153 D 85 H 27/35cm



00 - WHITE	10 - LINEN	89 - WENGÉ	FRAME
10 - LINEN	89 - WENGÉ	GRANITE	TEAK
			TOP

The C-table is a smart passe-partout side table that will suit many collections. The aluminium version is powdercoated with ultra-durable structure lacquer for optimal weather and scratch resistance, and a nice matte look. The C-table in teak is made of the best quality you can find. Only A-grade wood, grown in sustainably managed plantations in East-Java is used.

C-TABLE
P. 49, 189, 215

DESIGN BY STUDIO SEGERS



Product code alu 07481
W 17,7" D 17,7" H 17,7" /
W 45cm D 45cm H 45cm
Inside H 16,7" 42,5cm

Product code teak 01285
W 15,7" D 13,8" H 18,9" /
W 40cm D 35cm H 48cm
Inside H 15,7" / 40cm



00 - WHITE	10 - LINEN	89 - WENGÉ	TEAK	FRAME

The elegant Tao table collection is a lesson in perfectly balanced contrasts – bold sculptural pedestals and slim table tops that are pleasing to the touch. Designer Monica Armani has used refined lightened concrete to give a look of elegant solidity. The coffee table plays tricks with symmetry by setting the finely milled square table top off centre. The Tao tables come in natural linen and natural wengé tones to create striking centrepieces for any setting.

TAO
P. 45, 143

DESIGN BY MONICA ARMANI



Product code 01682
W 31,5" D 31,5" H 14,6"
W 80cm D 80cm H 37cm

10 - LINEN	89 - WENGÉ

The Natal Alu X-tables in aluminium combine functionality and aesthetics in a contemporary but timeless design. With different possibilities in shape, colours, heights and dimensions, you will always find the perfect coffee table for your setting or you can create elegant combinations.

NATAL ALU X
P. 9, 55, 57, 125, 127, 135, 149, 235

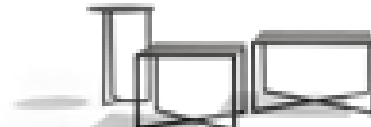
DESIGN BY TRIBÙ STUDIO

Product code 01676
Ø 13,8" H17,7"
Ø 35cm H45cm

Product code 01678
W 13,8" D 13,8" H17,7"
W 35cm D 35cm H45cm

Product code 01680
W 15,7" D 15,7" H13,8"
W 40cm D 40cm H35cm

Product code 01682
W 23,6" D 23,6" H13,8"
W 60cm D 60cm H35cm



00 - WHITE	10 - LINEN	60 - BURGUNDY	89 - WENGÉ

Minimalism with a playful twist. The legs are welded seamlessly in the length in an angle of 90° and are integrated in the top in a curved line to create a soft, friendly look. The frame, made out of one aluminium plate with a 6 mm thickness, is powdercoated with ultra-durable structure lacquer for optimal weather and scratch resistance and a nice matte look.



Product code 07482
W 47,2" D 27,6" H 10,6"
W 120cm D 70cm H 27cm

00 - WHITE 10 - LINEN

The Pure Sofa coffee table is a functional low table, with a frame in high-quality teak from plantations in East-Java and a top in ceramic. Ceramic is an ideal outdoor material, it is frost, UV, stain and scratch resistant. The ceramic tops are available in several natural tones with a beautiful cloudy pattern.

Product code 01282/01286
W 24,8" D 24,8" H 9,8"/13,8"
W 63cm D 63cm H 25cm/35cm

Product code 01284/01288
W 48,4" D 24,8" H 9,8"/13,8"
W 123cm D 63cm H 25cm/35cm

00 - CLOUDY WHITE 71 - CLOUDY SILK GREY 79 - CLOUDY GREY 90 - CLOUDY BLACK

The Vis à Vis coffee table is characterized by solid square slats with slightly rounded corners. The teak is of the best quality you can find. Only A-grade wood, grown in sustainably managed plantations in East-Java is used. Every log is handpicked during the cutting process of the tree. The coffee tables have the same square slats as the sofa borders and can stand alone or be attached to the sofa.

Product code 01781
W 39" D 39" H 71"
W 99cm D 99cm H 18cm

Product code 01784
W 47,6" D 39" H 71"
W 121cm D 99cm H 18cm

Product code 01786
W 47,6" D 47,6" H 71"
W 121cm D 121cm H 18cm

TEAK

MIRTHE

P. 213, 215

DESIGN BY FABIAAN VAN SEVEREN

Its beautifully finished round edges gives the Mood table a friendly and soft look. The teak is of the best quality you can find. Only A-grade wood, grown in sustainably managed plantations in East-Java is used. Every log is handpicked during the cutting process of the tree.

Product code 06282
W 26,0" D 26,0" H 11,0"
W 66cm D 66cm H 28cm

Product code 06284
W 47,2" D 26,0" H 11,0"
W 120cm D 66cm H 28cm

Product code 06286
W 69,7" D 19,7" H 15,0"
W 177cm D 50cm H 38cm

TEAK

MOOD

DESIGN BY STUDIO SEGERS



TOSCA

P. 95, 101, 103

DESIGN BY MONICA ARMANI

The elegant, tapered legs and the unique rounded form of the table top, gives the Tosca coffee table a very high-end look. The scratch and stain resistant ceramic top with delicately clouded pattern is coloured in the mass and laminated on glass to provide extra rigidity. The legs in stainless steel, powdercoated with ultra-durable lacquer provide for an exceptional stability.

Product code 05381
W 21,3" D 18,9" H 19,5"
W 54cm D 48cm H 49,5cm

Product code 05386
W 38,6" D 33,9" H 12,4"
W 98cm D 86cm H 31,5cm

10 - LINEN 89 - WENGÉ 10 - LINEN 89 - PIOMBO

ILE

P. 35, 117

DESIGN BY TRIBÙ STUDIO



Product code 01570/01580/01590
Ø 19,7" H 13,4"/16,1"/20,1"
Ø 50cm H 34/41/51cm

Product code 01572/01582/01592
Ø 23,6" H 13,4"/16,1"/20,1"
Ø 60cm H 34/41/51cm

00 - WHITE 10 - LINEN 89 - WENGÉ

Still water disturbed by a breeze is the visual reference for the T-Table. The light-reflective, hand crafted glazed lava stone top mirrors the sky and adds a unique quality with its naturally occurring imperfections. The glazing, adorned with a subtle crackle finish, makes the stone heat, water, UV and stain resistant. The pure and simple form of the T-Table is designed to fit harmoniously with other furniture in the Tribù collection.

Product code D2164
Ø 35,4" H 13,8"
Ø 90cm H 35cm

Product code D2165
Ø 49,2" H 13,8"
Ø 125cm H 35cm

00 - WHITE 10 - LINEN 89 - WENGÉ L10 - LINEN L70 - OCEAN



FRAME

TOP

The rugged basalt columns of the Giant's Causeway in Northern Ireland were the Inspiration for the Hexagon side table. It comes in a variety of heights and sizes, like the basalt columns, which makes a strong statement when grouped together. The sturdiness and pure symmetry of honeycomb also influenced these teak side tables. Hand crafted glazed lava stone, each piece unique and available in a selection of 4 colours, adds to the bold, natural look.

Product code D5040
Ø 27,2" H12,2"
Ø 69cm H31cm

Product code D5041
Ø 19,7" H19,3"
Ø 50cm H49cm

10 - LINEN L30 - MOSS L60 - BURGUNDY L70 - OCEAN

TEAK

FRAME

HEXAGON

P. 27, 83, 163, 237

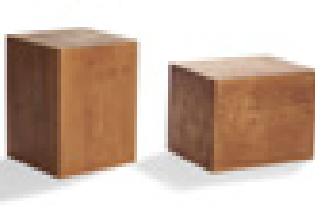
DESIGN MARC MERCKX



ROOTS

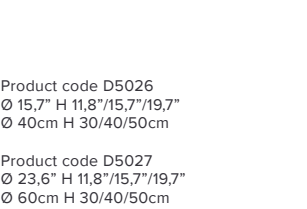
P. 9, 23, 127, 163, 193, 239

DESIGN BY TRIBÙ STUDIO



Product code D8102
W 11,8" D 11,8" H 15,7"
W 30cm D 30cm H 40cm

The Drops sidetables are inspired from the concentric circles that are formed by falling raindrops. The 3 different heights allow you to create a visual game that is even more enhanced by the connection you can make between the moon-shaped bases of the tables. The frame in aluminium is powdercoated with ultra-durable structure lacquer.



Product code D5026
Ø 15,7" H 11,8"/15,7"/19,7"
Ø 40cm H 30/40/50cm

Product code D5027
Ø 23,6" H 11,8"/15,7"/19,7"
Ø 60cm H 30/40/50cm

00 - WHITE 10 - LINEN 60 - BURGUNDY 89 - WENGÉ



The Tairu side table mixes practicality with natural beauty. The base is formed from a sturdy, hollow wooden rectangular with inset handles so it can be moved around easily. What sets the Tairu apart is the top, made from glazed lava stone from the Vesuvius. It is available in four sophisticated shades, each with a very subtle craquelure finish. The colours are applied by hand, which makes every piece unique.

Product code D8103
W 11,3" D 11,3" H 15,7"
W 30cm D 30cm H 40cm

10 - LINEN L30 - MOSS L60 - BURGUNDY L70 - OCEAN

TEAK

FRAME

TAIRU

P. 49, 57, 231

DESIGN TRIBÙ STUDIO



A cosy design in warm, natural materials. The innovative Tricord® yarn used for the back of the bar stool has been designed exclusively for Tribù. The polyester core provides strength and stability, while the combination of nautical fibres (polyolefin) creates a surprisingly soft look and touch, ensuring nevertheless resistance to all outside influences : frost, water, fungi and UV-rays. The backs can be replaced separately. The beautifully finished round edges of the party table gives it a friendly and soft look. The teak is of the best quality you can find. Only A-grade wood, grown in sustainably managed plantations in East- Java is used.

Product code barchair 06216
W 24,4" D 23,6" H 42,5" SH 29,9"
W 62cm D 60cm H 108cm SH 76cm

TEAK

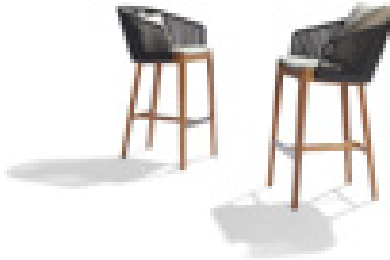
FRAME

10 - LINEN30 - MOSS70 - STONEGREY85 - EARTHBROWN89 - WENGÉ

WEAVE

MOOD

DESIGN BY STUDIO SEGERS



The well-studied ergonomic design of the Kos teak bar stool provides for excellent seating comfort. Tribù uses only the very best plantation wood from East-Java. Every log is hand-picked during the cutting process of the tree.

Product code 04016
W 15,4" D 19,7" H 40,9" SH 30,7"
W 39cm D 50cm H 104cm SH 78cm

TEAK

KOS

DESIGN BY WIM SEGERS



The Illum bar table with its slim legs is kept pure and simple. The frame in aluminium has a dual powdercoating to guarantee optimal scratch and UV resistance. The ceramic top is coloured in the mass and laminated on a layer of glass according to a specially developed lamination process, ensuring extra safety.

Product code 06586
W 39,4" D 39,4" H 41,7"
W 100cm D 100cm H 106cm

Product code 06587
W 59,8" D 39,4" H 41,7"
W 152cm D 100cm H 106cm

Product code 06588
W 83,5" D 28" H 41,7"
W 212cm D 71cm H 106cm

00 - WHITE10 - LINEN89 - WENGÉ

00 - WHITE02 - CARRARA10 - LINEN89 - PIOMBO90 - BLACK

TEAK

FRAME

TEAK TOP

CERAMIC TOP

ILLUM

P. 159

DESIGN BY MERCKX & MAES



Minimalism with a playful twist. The legs of the Mirthe party table and bar stool are welded seamlessly in the length in an angle of 90° and are integrated in the top in a curved line to create a soft, friendly look. The frame, made out of one aluminium plate with a 6 mm thickness, is powdercoated with ultra-durable structure lacquer for optimal weather and scratch resistance and a nice matte look. The table also fits over a dining table to serve as a buffet table.

Product code barchair 07416
W 13,8" D 14,2" H 31,1"
W 35cm D 36cm H 78cm

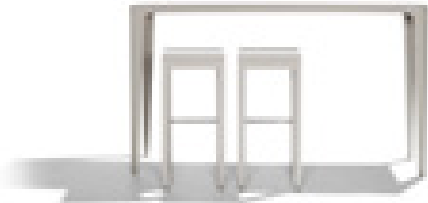
Product code party table 07487
W 70,9" D 19,7" H 41,3"
W 180cm D 50cm H 105cm

00 - WHITE10 - LINEN

MIRTHE

P. 219

DESIGN BY WIM SEGERS



CTR is characterised by a tube in powdercoated stainless steel that follows the outline of the chair in one continuous line. The woven backrest is attached at only 2 points to the frame, resulting in a flexible backrest that ensures an outstanding back support. The yarn in polyolefin resists all weather conditions, but has nevertheless a surprisingly natural look & feel. The seat is upholstered with a water-repellent cushion which can be easily removed.

Product code 01116
W 22,8" D 22,4" H 44,1" SH 31,9"
W 58cm D 57cm H 112cm SH 81cm

00 - WHITE89 - WENGÉ

10 - LINEN89 - WENGÉ

FRAME

WEAVE

CTR

P. 159

DESIGN BY PIERGIORGIO CAZZANIGA



AVAILABLE COLOUR COMBINATIONS,
SEE PRICE LIST.

The teak Illum bar table maintains the slender proportions of the aluminium version, using the finest teak from carefully managed plantations in East Java. The table top connects with the legs in a smooth curve, the corners being hand-sculpted and sanded from a solid piece of wood. There are no hard edges on this Illum table – all contours are rounded for a soft, pleasing look and feel.

Product code 06586-T
W 39,4" D 39,4" H 41,7"
W 100cm D 100cm H 106cm

Product code 06588-T
W 83,5" D 28,7" H 41,7"
W 212cm D 73cm H 106cm

TEAK

FRAME

00 - WHITE02 - CARRARA10 - LINEN89 - PIOMBO90 - BLACK

TEAK

TEAK TOP

CERAMIC TOP

ILLUM TEAK

DESIGN BY MERCKX & MAES



RELAXING LOUNGERS

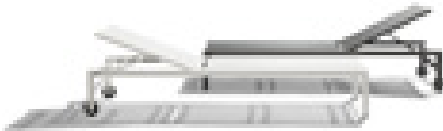
PRODUCT OVERVIEW

The Forum lounge is light, yet made of a very steady aluminium construction, and provides an excellent seating comfort. The frame in aluminium is powdercoated with ultra-durable structure lacquer for a nice matte look. The seat is made of Batyline which is reputed for its durability, UV resistance and lasting high tension.

FORUM
P. 245

DESIGN BY TRIBÙ STUDIO

Product code 06040
W 26,8" D 76,8" H 12,6"
W 68cm D 195cm H 32cm
Adjustable into 6 positions



00 - WHITE
10 - LINEN
89 - WENGÉ

The Illum lounge not only inclines, but also lowers itself to offer an unmatched comfort, while all the mechanics involved – a newly developed pump system - are astutely hidden away. The frame is made of aluminium, powdercoated with a double layer of ultra- durable structure lacquer for a nice matte look. A seat in Batyline guarantees a lasting high tension and an excellent resistance to UV rays, dirt and fungi.

ILLUM
P. 201, 205

DESIGN BY MERCKX & MAES

Product code 06540
W 27,5" D 78,7" H 15"
W 70cm D 200cm H 39cm

Adjustable to any position you like by means of a pump system



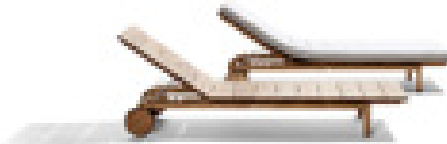
00 - WHITE
10 - LINEN
89 - WENGÉ

The combination of the broad slats and the pure, but powerful design of the Kos lounge reinvents teak in a modern, robust way. Tribù uses only the very best plantation wood from East-Java. Every log is handpicked during the cutting process of the tree. The lounge is adjustable into positions 5 positions and has wheels with non-marking rubber.

KOS
P. 197

DESIGN BY WIM SEGERS

Product code 04040
W 25,6" D 77,2" H 10,2"
W 65cm D 196cm H 26cm
Adjustable into 5 positions



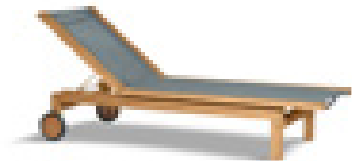
TEAK

The extra broad Pure Light lounge combines the natural look of teak with easy- maintance Batyline, which makes it an ideal furniture in surroundings of swimmingpools, beaches, spa's etc. The border in teak from plantations in East-Java serves as an extra side table. Thanks to the open weave, the Batyline dries rapidly. It has an excellent resistance to UV rays, a lasting high tension and is dirt- and fungi repellent.

PURE LIGHT
P. 195

DESIGN BY TRIBÙ STUDIO

Product code 01340-74
W 30,3" D 77,9" H 13,4"
W 77cm D 198cm H 34cm
Adjustable into 7 positions



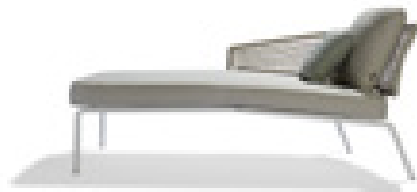
TEAK
74 - QUARTZ
SEAT

CTR is characterised by a tube in powdercoated stainless steel that follows the outline of the meridiene in one continuous line. The woven backrest, attached at only 2 points to the frame, ensures an outstanding back support while the slightly inclined base ensures relaxed seating. The yarn in polyolefin used for the weave, resists all weather conditions, but has nevertheless a surprisingly natural look & feel. The seat is upholstered with a water-repellent cushion which can be easily removed.

CTR MERIDIENNE
P. 155, 163

DESIGN BY PIERGIORGIO CAZZANIGA

Product code meridiene left 01103
Product code meridiene right 01104
W 38,6" D 72,4" H 31,9" SH 18,1"
W 98cm D 184cm H 81cm SH 46cm



00 - WHITE
89 - WENGÉ
10 - LINEN
89 - WENGÉ
FRAME
WEAVE

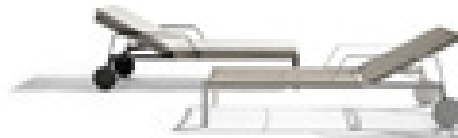
AVAILABLE COLOUR COMBINATIONS,
SEE PRICE LIST.

Light and airy, the silhouette of the Nodi lounge is characterized by twisted-interlaced rope in weather-resistant Canax®, stretched across a precise geometric wireframe. Pared back, refined proportions and a minimalist approach to materiality lend a casual lightness to the lounge. The armrests add extra comfort.

NODI
P. 78-81

DESIGN BY YABU PUSHELBERG

Product code 01940
W 29,5" D 76,8" H12,6"
W 75 cm D 195cm H32cm



00 - WHITE
89 - WENGÉ
00 - OFF WHITE
10 - LINEN
FRAME
WEAVE

AVAILABLE COLOUR COMBINATIONS,
SEE PRICE LIST.

The adjustable Natal Alu lounger is generously sized with a Batyline seat and sturdy wheels. The aluminium frame is powdercoated with ultra-durable, UV- and scratch resistant structure lacquer for a nice matte look. Batyline® from Ferrari is renowned for its exceptional tear strength and dimensional stability, ensuring it will keep its shape along with its colour.

NATAL ALU
P. 147, 149, 247

DESIGN BY WIM SEGERS



Product code 05940
W 28,3" D 80,7" H 13"
W 72cm D 205cm H 33cm
Adjustable into 7 positions

00 - WHITE 89 - WENGÉ



Minimalism with a playful twist, the Mirthe collection has everything that goes with a typical Tribù furniture piece : pure, clean lines, timeless. The lounger is made out of 6mm bent plate aluminium: robust, completely recyclable, easy to clean and ideal for outdoor use. Ultra-durable structure lacquer provides a nice matte look.

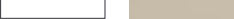
MIRTHE
P. 211

DESIGN BY WIM SEGERS



Product code 07440
W 25,6" D 79,5" H 12,6"
W 65cm D 202cm H 32cm
Adjustable into 6 positions

00 - WHITE 10 - LINEN



When Cazzaniga started to design the Vis à Vis lounger, he thought of a place where people could be outside and communicate with each other in total comfort. Result was a sunbed with royal dimensions and a handy integrated tabletop that is designed in a way that two loungers fit into each other. Thanks to the flexible bed base, you can lie either next to each other or opposite each other. The teak from plantations in East-Java has rounded corners to ensure a pleasant touch with your skin. Every log is handpicked during the cutting process.

VIS A VIS
P. 59, 61

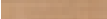
DESIGN BY PIERGIORGIO CAZZANIGA



Product code 01741 (wheels)
W 42,1" D 80,7" H 11,8"
W 107cm D 205cm H 30cm
Adjustable into 5 positions

Product code 01740 (without wheels)
W 42,1" D 80,7" H 11,8"
W 107cm D 205cm H 30cm
Adjustable into 5 positions

TEAK



Elegantly tapered legs and a crisp, clean silhouette define the Branch lounger. The slender frame is made of high pressure injected aluminium, a specialised technique that makes the lounger incredibly strong yet surprisingly light. Powdercoating the frame with a double ultra-durable lacquer adds a high performance finish. The Branch lounger can be stacked up to 12 pieces high, making it ideal for the hospitality sector.

BRANCH LOUNGER
P. 177

DESIGN BY LIEVORE ALTHERR MOLINA



Product code 07612
W 28,6" D 81,5" H 13,4"
W 73cm D 207cm H 34cm
Adjustable into 6 positions

00 - WHITE 10 - LINEN 89 - WENGÉ



A low frame in powdercoated stainless steel is upholstered with an extra-large, vertical weave, developed exclusively by Tribù. A combination of textilene and Tricord (polyolefin) is knitted over a tube of EPDM foam without any visible joint. The material which has a natural look and feel, is nevertheless fungi resistant, stain repellent and does not fade.

TOSCA
P. 111

DESIGN BY MONICA ARMANI



Product code 05340
W 33,1" D 82,6" H 10,2"
W 84cm D 210cm H 26cm
Adjustable into 5 positions

10 - LINEN 89 - WENGÉ



A cosy design in warm, natural materials. The innovative Tricord® yarn has been designed exclusively for Tribù. The polyester core provides strength and stability, while the combination of nautical fibres (polyolefin) creates a surprisingly soft look and touch, ensuring nevertheless resistance to all outside influences : frost, water, fungi and UV-rays. The backs can be replaced separately. The comfortable outdoor cushion can be left outside, even in the rain, thanks to the ventilating filling in a waterproof cover.

MOOD DAYBED
P. 131

DESIGN BY STUDIO SEGERS



Product code 06249
W 63,8" D 68,5" H 27,7" SH 16,9"
W 162cm D 174cm H 69cm SH 43cm

TEAK		FRAME						
10 - LINEN	30 - MOSS	70 - STONEGREY	85 - EARTHBROWN	89 - WENGÉ				WEAVE

An elegant seating shell in powder-coated stainless steel is upholstered with an extra- large, vertical weave, developed exclusively by Tribù. A great deal of research resulted in a unique product with a natural and soft appearance, that is nevertheless 100% weatherproof. A combination of textile and Tricord (polyolefin) is knitted over a tube of EPDM foam without any visible joint. The material is fungi resistant, stain repellent and does not fade. The comfortable outdoor cushion can be left outside, even in the rain, thanks to the ventilating filling in a waterproof cover.

TOSCA
P. 99, 101, 105, 131

DESIGN BY MONICA ARMANI



Product code 05349
W 66,9" D 73,2" H 32,3" SH 15,8"
W 170cm D 186cm H 82cm SH 40 cm

10 - LINEN	89 - WENGÉ

A cosy design in warm, natural materials. The innovative Tricord® yarn has been designed exclusively for Tribù. The polyester core provides strength and stability, while the combination of nautical fibres (polyolefin) creates a surprisingly soft look and touch, ensuring nevertheless resistance to all outside influences : frost, water, fungi and UV-rays. The backs can be replaced separately. The comfortable outdoor cushion can be left outside, even in the rain, thanks to the ventilating filling in a waterproof cover.

MOOD LOUNGE BED

DESIGN BY STUDIO SEGERS



Product code 06250
W 59,1" D 55,5" H 27,2" SH 16,9"
W 154cm D 141cm H 69cm SH 43cm

TEAK		FRAME						
10 - LINEN	30 - MOSS	70 - STONEGREY	85 - EARTHBROWN	89 - WENGÉ				WEAVE

Capture sunshine and shade with the Pavilion daybed, designed by Monica Armani. The classic canopied bed has been updated with a slimline powder-coated aluminium frame. The daybed can be personalised with a choice of sheer curtain fabrics and paint finishes, while the back and ceiling come in different materials. The super-strong Batyline seat lining can be used alone or with 2 comfortable outdoor cushions and can be further customised with a detachable side table.

PAVILION DAYBED
P. 165-169

DESIGN BY MONICA ARMANI



Product code 018xx
W 82,7" D 86,2" H 88,2" SH 15,7cm
W 210cm D 219cm H 224cm SH 40cm

00 - WHITE	89 - WENGÉ

Options back wall: teak slats, aluminium slats, sunvision or no back wall

Options roof: teak slats, aluminium slats, movable sunvision

Accessories: curtains & side table

CTR is characterised by a tube in powdercoated stainless steel that follows the outline of the chair in one continuous line. The woven backrest is attached at only 2 points to the frame, resulting in a flexible backrest that ensures an outstanding back support. The yarn in polyolefin resists all weather conditions, but has nevertheless a surprisingly natural look & feel. The seat is upholstered with a water-repellent cushion which can be easily removed.

CTR LOUNGE BED

DESIGN PIERGIORGIO CAZZANIGA



Product code 01150
W 61" D 50" H 30,3" SH 18,1"
W 155cm D 127cm H 77cm SH 46cm

00 - WHITE	89 - WENGÉ	FRAME
10 - LINEN	89 - WENGÉ	WEAVE

AVAILABLE COLOUR COMBINATIONS,
SEE PRICE LIST.

The Eclipse umbrella with wooden pole does not only provide you with a welcoming cool shade, but also creates a relaxing, warm atmosphere on your terrace. The pole and ribs are made of Eucalyptus wood, a tropical hardwood with a straight grain and hardly no knots. The fabrics are solution dyed Sunbrella outdoor fabrics. The umbrella is easy to operate with the double pulley system in electropolished stainless steel 316 and can withstand all weather conditions. Base in granite and protective cover available.

Product code UW315
Ø 137,8" H 102,3
Ø 350cm H 260cm

Product code UW322
W 118,1" D 118,1" H 102,3"
W 300 D 300cm H 260cm

Product code UW323
W 137,8" D 137,8" H 102,3"
W 350 D 350cm H 260cm
Ø pole 2,5" / 63mm

02 - CANVAS	72 - TAUPE	FABRIC

ECLIPSE WOOD
P. 243



This elegant design umbrella, available in a square and round shape, has a very solid pole in powdercoated aluminium. The canvas is made of durable, solution dyed Sunbrella outdoor fabric and is attached with flat-head bolt connections to the ribs. The umbrella is easy to operate thanks to a double pulley system in electropolished stainless steel 316 and can withstand all weather conditions. Base in granite and protective cover available.

Product code UA315
Ø 137,8" H 102,3"
Ø 350cm H260cm

Product code UA322
W 118,1" D 118,1" H 102,3"
W 300cm D 300cm H 260cm

Product code UA323
W 137,8" D 137,8" H 102,3"
W 350 D 350cm H 260cm
Ø pole 2,4" / 61mm

00 - WHITE	10 - LINEN	89 - WENGÉ	POLE
01 - NATTÉ WHITE	04-NATTÉ NATURE GREY	89-NATTÉ WENGÉ	FABRIC

ECLIPSE ALU
P. 247



This free pole umbrella rotates 360° and has the possibility to tilt, creating unlimited shade possibilities. The wind up winch system makes it very easy to open and close the umbrella. The pole is made of powdercoated aluminium, the canvas of durable, solution dyed Sunbrella outdoor fabrics. Protective cover included. Two granite bases are available, one for general, domestic use and one for heavy duty.

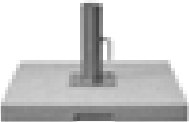
Product code UA442
Ø 126" / Ø 320cm

Product code UA441
W 118,1" D118,1" / B 300cm D 300cm

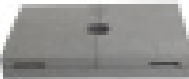
Ø pole 2,9"x2,9" / 75x75mm
360° rotation

00 - WHITE	10 - LINEN	89 - WENGÉ	POLE
01 - NATTÉ WHITE	04-NATTÉ NATURE GREY	89-NATTÉ WENGÉ	FABRIC

VITINO PENDULUM TILT
P. 245



Product code BG32
Eclipse base granite



Product code BG45
Vitino Pendulum base granite 105 kg



Product code BG42
Vitino Pendulum base granite contract 150 kg

ACCESSORIES

PRODUCT OVERVIEW

With the lanterns made of thermal-ly strengthened 4mm glass in a teak wooden frame, you can make your evenings extra cosy. Create variation by mixing the 2 available sizes with the base in teak. The subtle handle in Canax® rope allows easy lifting.

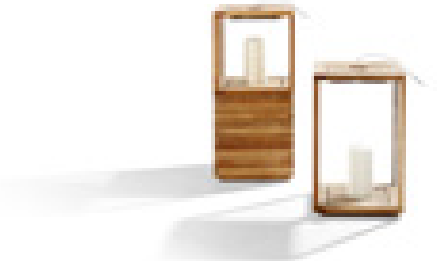
LANTERNS
P. 29, 241

DESIGN BY TRIBÙ STUDIO

Product code D5015
W 13,0" D 13,0" H 13,8"
W 33cm D 33cm H 35cm

Product code D5016
W 13,0" D 13,0" H 20,1"
W 33cm D 33cm H 51,5cm

Product code D5017
W 13,0" D 13,0" H 14,4"
W 33cm D 33cm H 36,5cm

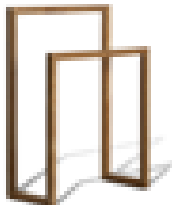


The towel rack completes the score in terms of the kind of comfort that goes with your swimming pool or pond. The teak design integrates beautifully into the environment and is sufficiently large to dry two beach towels.

TOWEL RACK

DESIGN BY TRIBÙ STUDIO

Product code D5022
W 26,4" D 11,8" H 27,6"/35,4"
B 67cm D 30cm H 70/90cm



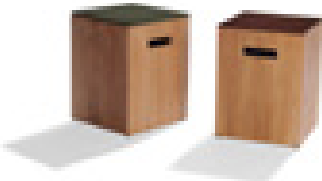
The Tairu side table mixes practicality with natural beauty. The base is formed from a sturdy, hollow wooden rectangle with inset handles so it can be moved around easily. What sets the Tairu apart is the top, made from glazed lava stone from the Vesuvius. It is available in four sophisticated shades, each with a very subtle craquelure finish. The colours are applied by hand, which makes every piece unique.

TAIRU
P. 49, 57, 231

DESIGN TRIBÙ STUDIO

Product code D8103
W 11,3" D 11,3" H 15,7"
W 30cm D 30cm H 40cm

10 - LINEN L30 - MOSS L60 - BURGUNDY L70 - OCEAN



Monsieur Tricot is a collection of distinctive knitted outdoor lighting. Belgian designer Ilia Eckardt grew up immersed in the Belgian fashion scene, experimenting with innovative knitting techniques and weatherproof cord. His handmade globe and drop lights give a warm glow and cast beautiful shadows. Different shapes, colours and types of knitting are the perfect compliment to Tribù's furniture. Battery powered Led and bluetooth controlled. *

MONSIEUR TRICOT
P. 7, 23, 79, 137, 145, 221-227

DESIGN BY ILIA ECKARDT

Standing Monsieur Lebonnet *
Product code 080130S Ø 11,8" / Ø 30cm
Product code 080140S Ø 15,7" / Ø 40cm
Product code 080160S Ø 23,6" / Ø 60cm

Hanging Monsieur Lebonnet
Product code 080130H Ø 11,8" / Ø 30cm
Product code 080140H Ø 15,7" / Ø 40cm
Product code 080160H Ø 23,6" / Ø 60cm

Standing Madame Latoque *
Product code 080230S Ø 11,8" / Ø 30cm
Product code 080240S Ø 15,7" / Ø 40cm

Hanging Madame Latoque
Product code 080230H Ø 11,8" / Ø 30cm
Product code 080240H Ø 15,7" / Ø 40cm

Standing Madame Cachet *
Product code 080330S Ø 11,8" / Ø 30cm
Product code 080340S Ø 15,7" / Ø 40cm
Product code 080350S Ø 19,7" / Ø 50cm

Hanging Madame Cachet
Product code 080330H Ø 11,8" / Ø 30cm
Product code 080340H Ø 15,7" / Ø 40cm
Product code 080350H Ø 19,7" / Ø 50cm

Hanging Monsieur Ellipse
Product code 080440H Ø 15,7" / Ø 40cm



This outdoor accessory with a primal look is made of one massive piece of teak and therefore very exclusive. Cracks and even wholes in the wood, bring about its charm, making every piece unique.

ROOTS
P. 9, 23, 127, 163, 193, 239

DESIGN BY TRIBÙ STUDIO

Product code D8102
W 11,8" D 11,8" H 15,7"
W 30cm D 30cm H 40cm



Conceived for the outdoors, the Nomad poufs are totally waterproof thanks to a draining structure consisting of EPS, upholstered with dryfoam. They are slightly raised from the ground by three little feet attached to a base in marine grade plywood. The Nomad poufs are available in a range of no less than 70 different outdoor fabrics.

NOMAD
P. 8, 29, 81, 131, 147, 229

DESIGN BY MONICA ARMANI

Product code C05032W
Ø 24,0" H 18,1" / Ø 61cm H 46cm

Product code C05033W
Ø 36,2" H 16,9" / Ø 92cm H 43cm

Product code C05034W
Ø 48,0" H 16,9" / Ø 122cm H 43cm



The fluffy design of these irresistible poufs, transform your terrace in an extra cosy place in just a minute. Thanks to the three dimensions with different heights you can make beautiful combinations. The poufs have a weather resistant filling. As for the fabric, you can choose from a range of no less than 70 different outdoor fabrics.

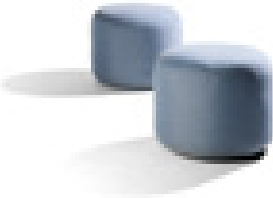
POUFS
P. 143, 189, 191

DESIGN BY TRIBÙ STUDIO

Product code C0009W
Ø 17,7" H 15,7" / Ø 45cm H 40cm

Product code C0010W
Ø 23,6" H 16,5" / Ø 60cm H 42cm

Product code C0011W
Ø 35,4" H 15,0" / Ø 90cm H 38cm

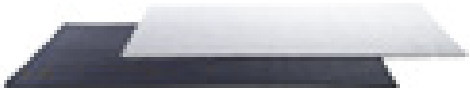


The outdoor rugs are made of 100% solution dyed PVC coated polyester which makes them comfortable for barefoot and perfectly resistant to sun, rain and mildew. With their natural colours, the rugs give the patio a warm and homely cosiness and make the atmosphere complete.

LOFT OUTDOOR RUGS
P. 23, 27, 33, 97, 103, 137, 163, 193, 233

DESIGN BY TRIBÙ STUDIO

Product code D2001 without fringes
W 78,7" D 78,7" / 200x200cm
W 78,7" D 94,5" / 200x240cm
W 98,4" D 98,4" / 250x250cm
W 98,4" D 118,1" / 250x300cm
W 78,7" D 118,1" / 200x300cm
W 98,4" D 137,8" / 250x350cm



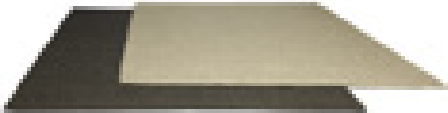
00 - WHITE 10 - LINEN 89 - WENGÉ

The 3D weaving gives the Shindi rugs a luxurious look. Made of 100% solution dyed PVC coated polyester, they are perfectly resistant to sun, rain and mildew. With their natural colours, the rugs give your patio a warm and homely cosiness and make the atmosphere complete.

SHINDI OUTDOOR RUGS
P. 9, 11, 49, 55, 57, 125, 231

DESIGN BY TRIBÙ STUDIO

Product code D2003
W78,7" D 78,7/200x200cm
W78,7" D 98,4/200x250cm
W78,7" D 118,1/200x300cm
W78,7" D 137,8/200x350cm
W78,7" D 177/200x450cm
W118,1" D 118,1/300x300cm
W118,1" D 157,5/300x400cm



10 - LINEN 12 - HEMP 89 - WENGÉ

CREDITS

STYLING	Rina Christoffels
PHOTOGRAPHY	Sven Geboers
	Roel De Cock
	Tim Van de Velde
GRAPHIC DESIGN	Louise Mertens
SPECIAL THANKS TO	Terraza Balear (p. 165)
	Miguel Bibiloni

Tribù reserves the right to modify their products without prior notification. Colours may differ from reality. Our designs are registered internationally.